

**LOS ANGELES COUNTY
DEPARTMENT OF PUBLIC WORKS**

BENCHMARKS



WHITTIER QUAD

**2005 ADJUSTMENT
2005 BASELINE
NAVD 88 DATUM FOOT/METER**

PREFACE

The Department of Public Works level net is composed of more than 1,700 miles or 2720 kilometers of levels supporting in excess of 9,000 benchmarks. Previously when a major readjustment of the net was undertaken, to emphasize the complete break with previous elevations, the CY, CG, and CL, series benchmarks were re-labeled DY, DG, and DL, respectively. Beginning in 1993 the Baseline readjustment year will be indicated on Baseline BM's, as indicated below (*). Henceforth all BM numbers will be labeled as a Y, G, or L series that will no longer indicate the major adjustment year.

To facilitate the adjustment, indexing and distribution of the adjusted values of the net, the county territory was divided into 33 quads or areas. For the identification purposes each quad was given a name (i.e. "Rosemead", "La Mirada", and "Santa Fe"...etc). When benchmarks and elevations in the quad are used, the name of the bench and quad must be stated in the description, i.e.:

(*)	BASELINE	90.057	L&BR IN CTR OF CB RET @ NE COR	Y 9191
	(1990)	295.461	LA HABRA BLVD & VALLEY HOME AVE	

It is expected that this general adjustment will for the most part remain sound for 8 to 10 years. Updating constrained adjustments will continue in the future. When a quad is readjusted, new elevations will be published and the date of readjustment will be noted in the benchmark description. Two benchmarks with different adjustment dates will not normally agree with each other.

The basic accuracy of the net is reflected by an indicated field probable error of ± 0.017 feet per mile (4mm per kilometer) of leveling as determined from conditions of closure. However, many years of experience in vertical control in the greater Los Angeles basin and Antelope Valley indicates that because of varying degrees of subsidence and heaving, the true datum is recovered only by obtaining substantial agreement of a number of benchmarks.

The users of this network of benchmarks are invited to assist in its maintenance by notifying this department of cases of obliteration, apparent mistakes in descriptions or elevations, and the disturbance of benchmarks.

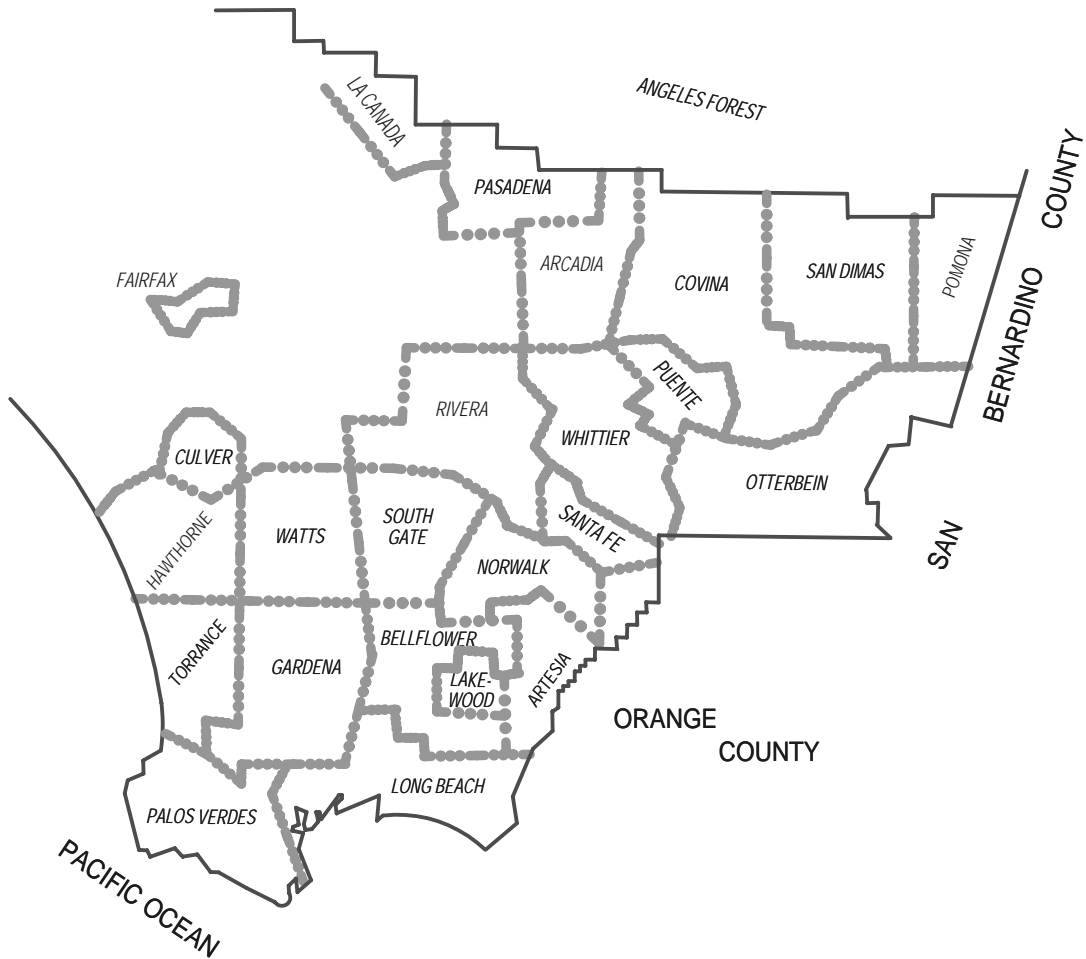
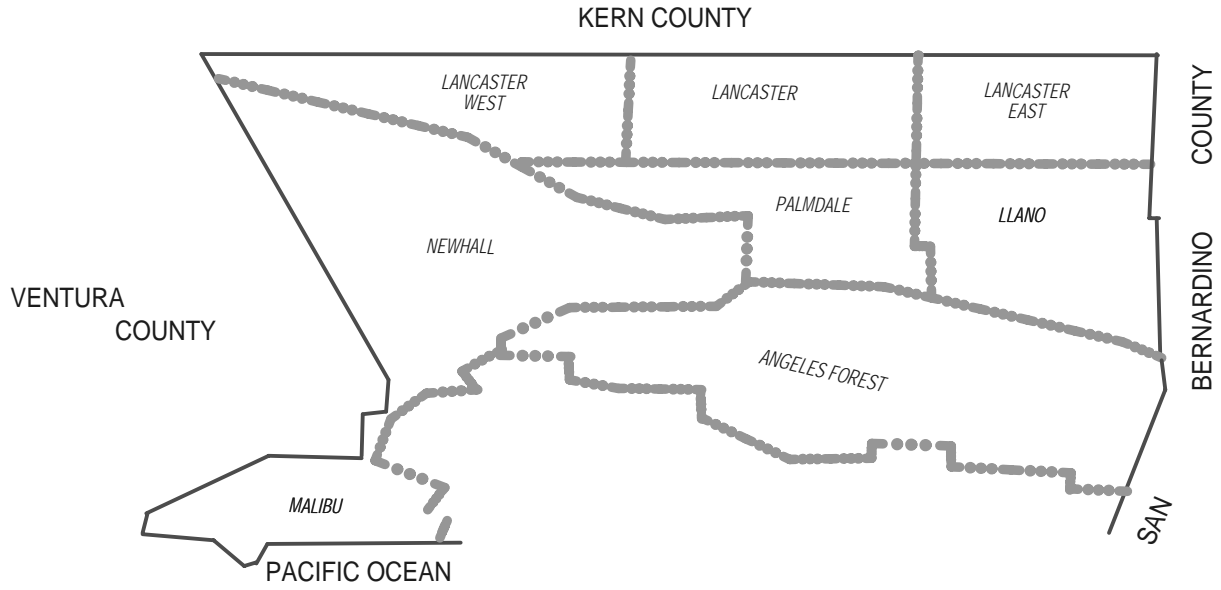
Datum: North American Vertical Datum of 1988 (NAVD88)

Note: NAVD 1988 minus approximately 2.3 feet (70 cm) equals NGVD 1929 Datum. For more accurate equations at individual benchmarks refer to previous publications.

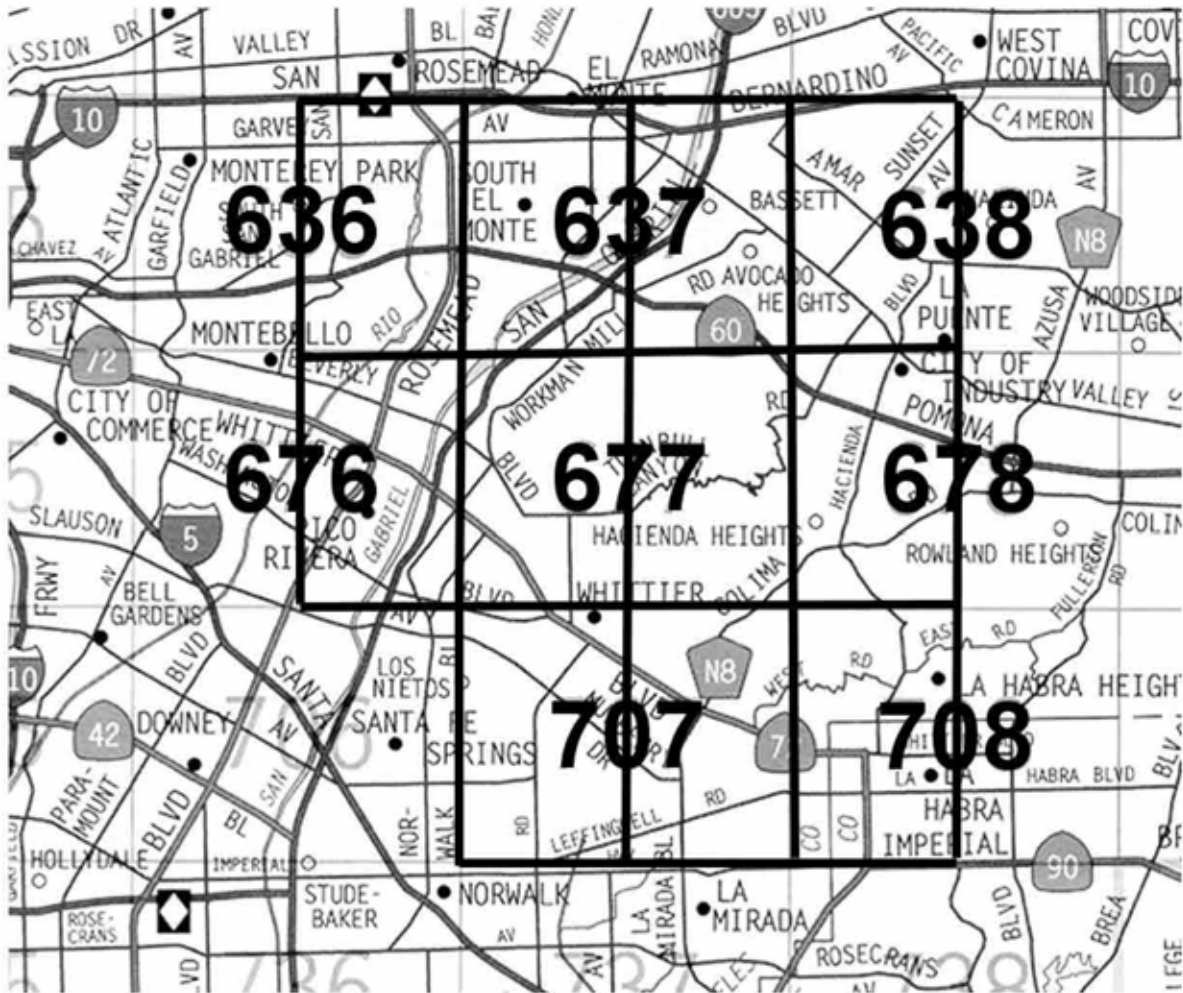
Abbreviations used in Benchmark Descriptions

Abbreviations	Descriptions	Abbreviations	Descriptions
<i>ABUT</i>	Abutment	<i>LT</i>	Lead and Tack
<i>ALG</i>	Along	<i>LACE</i>	Los Angeles City Engineer
<i>ANG PT</i>	Angle Point	<i>LACS</i>	La County Engineer
<i>B/W</i>	Back of Walk	<i>LAFC</i>	La County Flood Control
<i>BCR</i>	Begin Curb Return	<i>L&BN</i>	Lead and Bench Nail
<i>BC</i>	Begin Curve	<i>L&BR</i>	Lead and Brad
<i>BLDG</i>	Building	<i>L&N</i>	Lead and Nail
<i>BM</i>	Benchmark	<i>L&SPK</i>	Lead and Spike
<i>BT SPK</i>	Boat or Bolt Spike	<i>L&T</i>	Lead and Tack
<i>BR CAP</i>	Brass Cap Monument	<i>MCR</i>	Middle Curb Return
<i>C B</i>	Catch Basin	<i>MKD</i>	Marked
<i>CTR</i>	Center	<i>MC</i>	Middle Curve
<i>C/L</i>	Centerline	<i>MON</i>	Monument
<i>C/L INT</i>	Centerline Intersection	<i>N/O</i>	North of
<i>C/L PROD</i>	Centerline Produced	<i>NR</i>	Near
<i>CONC</i>	Concrete	<i>OPP</i>	Opposite
<i>COR</i>	Corner	<i>PI</i>	Point of Intersection
<i>COE</i>	Corps of Engineers	<i>PK&W</i>	PK Nail and Washer
<i>CULV</i>	Culvert	<i>P/L</i>	Property Line
<i>CYN</i>	Canyon	<i>POST</i>	Point on Simi-Tangent
<i>CB</i>	Curb	<i>PP</i>	Power Pole
<i>CS MON</i>	Co. Eng. Monument	<i>PVMT</i>	Pavement
<i>CT SPK</i>	Cut Spike	<i>PROD</i>	Produced
<i>DPW</i>	Dept of Public Works	<i>RD</i>	Road
<i>DR</i>	Driveway	<i>RDBM</i>	Road Dept Benchmark
<i>E/O</i>	East of	<i>RDBM TAG</i>	Road Dept Benchmark Tag
<i>ECR</i>	End Curb Return	<i>RR</i>	Railroad
<i>EC</i>	End Curve	<i>R/W</i>	Right of Way
<i>ENT</i>	Entrance	<i>SDMH</i>	Storm Drain Manhole
<i>FL</i>	Flow line	<i>SMH</i>	Sewer Manhole
<i>FTG</i>	Footing	<i>SPK</i>	Spike
<i>FRWY</i>	Freeway	<i>ST&W</i>	Spike Tin and Washer
<i>F/W</i>	Front of Walk	<i>S/O</i>	South of
<i>GAR</i>	Garage	<i>TP</i>	Telephone Pole
<i>HDWL</i>	Head Wall	<i>USC&GS</i>	US Coast and Geodetic Survey
<i>HSE</i>	House	<i>USGS</i>	US Geological Survey
<i>HWY</i>	Highway	<i>WK</i>	Walk
<i>INT</i>	Intersection	<i>W/O</i>	West of
<i>IP</i>	Iron Pipe		

QUAD COVERAGE INDEX MAP

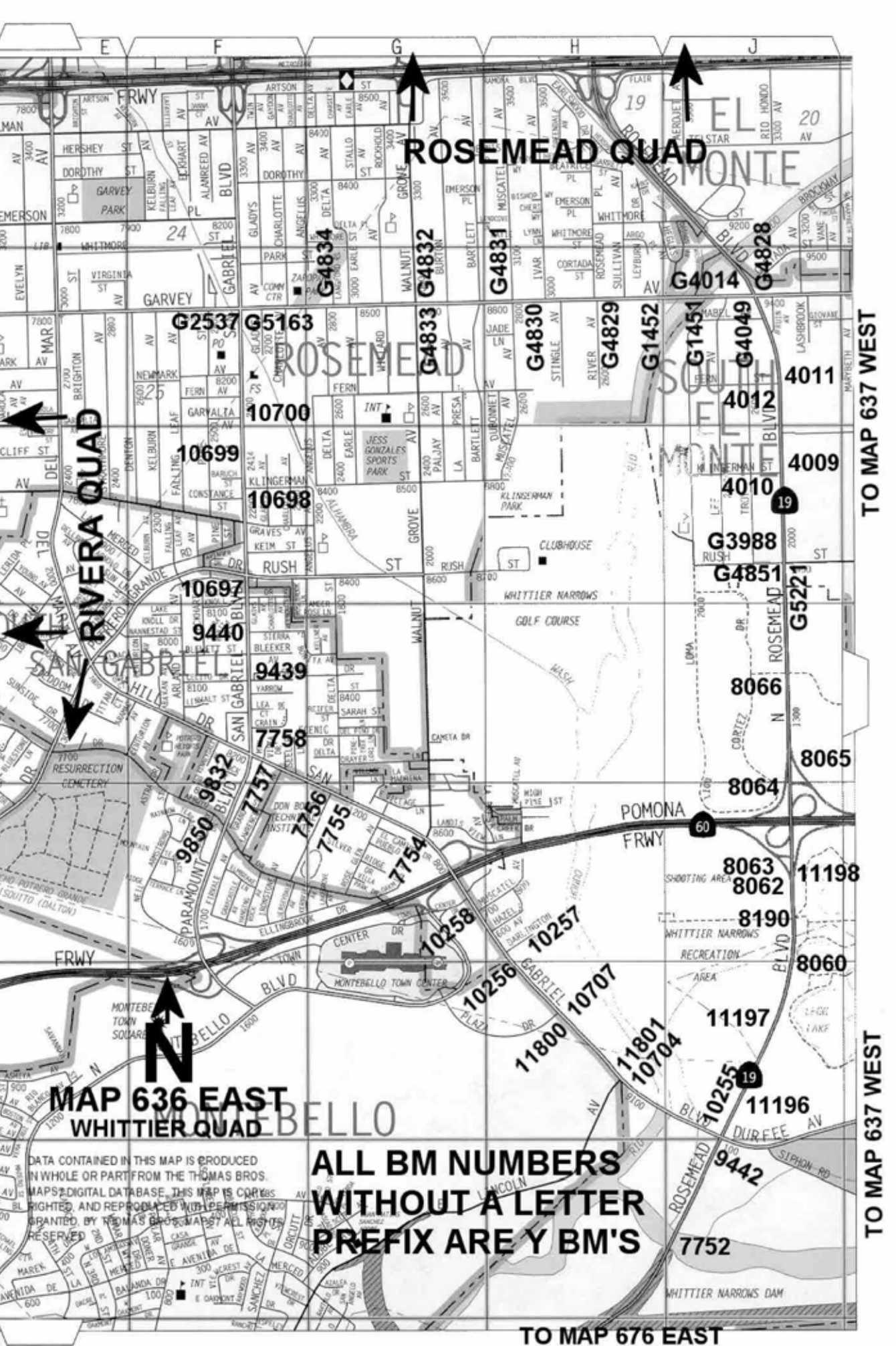


WHITTIER QUAD INDEX



**NUMBERS REFER
TO THOMAS BROS
PAGE NUMBERS**

**EACH THOMAS BROS
PAGE IS DIVIDED INTO
TWO INDEX PAGES
EAST AND WEST**



ROSEMEAD QUAD

RIVERA QUAD

G2537 G5163

ROSEMEAD

G4014 G4828

10699

10700

10698

10697

9440

9439

7758

9850

9832

7757

7756

7755

7754

10258

10256

10257

11800

10707

11801

10704

11197

11196

10255

11198

8063

8062

8190

8060

9442

7752

**MAP 636 EAST
WHITTIER QUAD**

**ALL BM NUMBERS
WITHOUT A LETTER
PREFIX ARE Y BM'S**

TO MAP 676 EAST

TO MAP 637 WEST

TO MAP 637 WEST

DATA CONTAINED IN THIS MAP IS PRODUCED IN WHOLE OR PART FROM THE THOMAS BROS. MAPS DIGITAL DATABASE. THIS MAP IS COPYRIGHTED AND REPRODUCED WITH PERMISSION GRANTED BY THOMAS BROS. MAPS. ALL RIGHTS RESERVED.

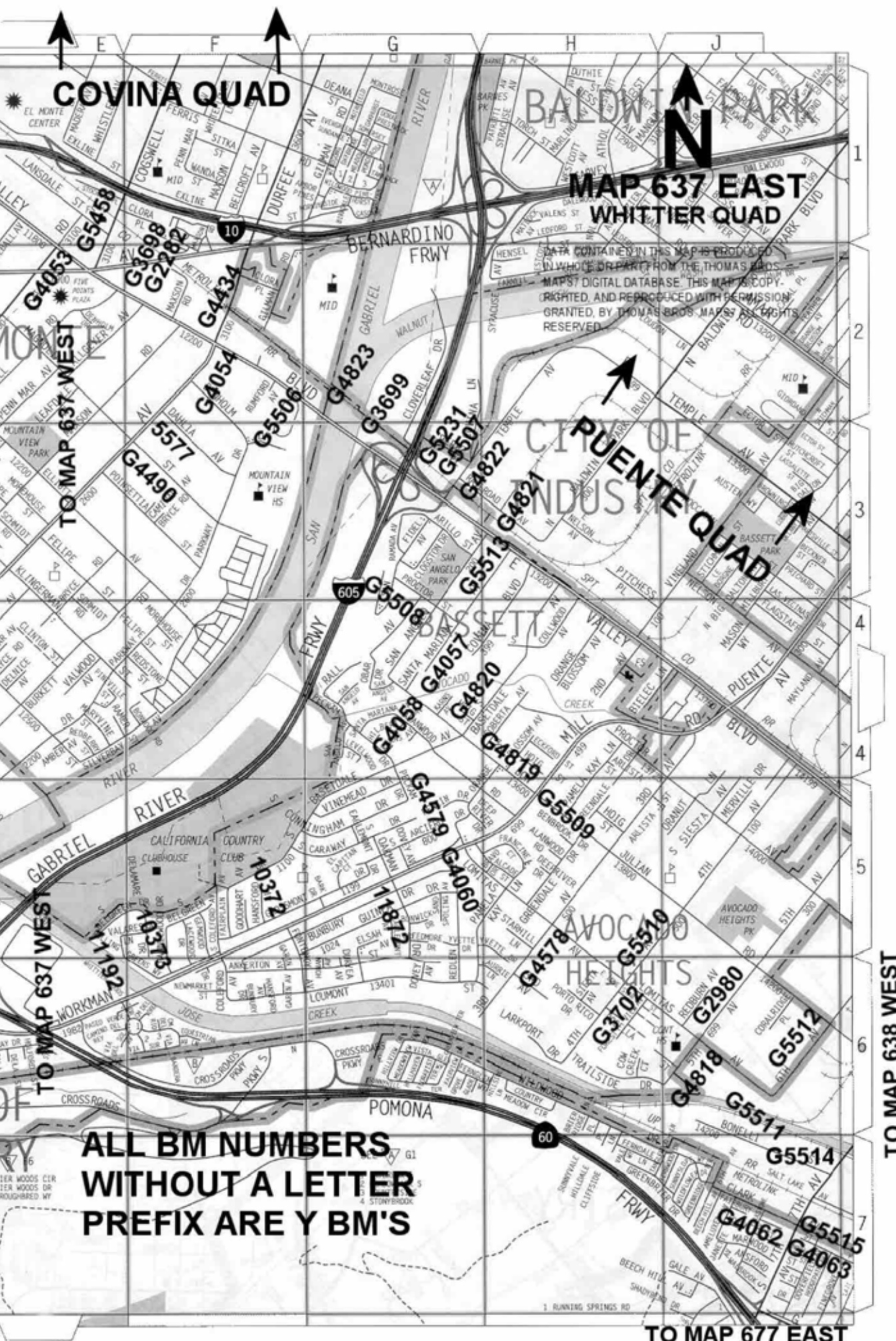
COVINA QUAD

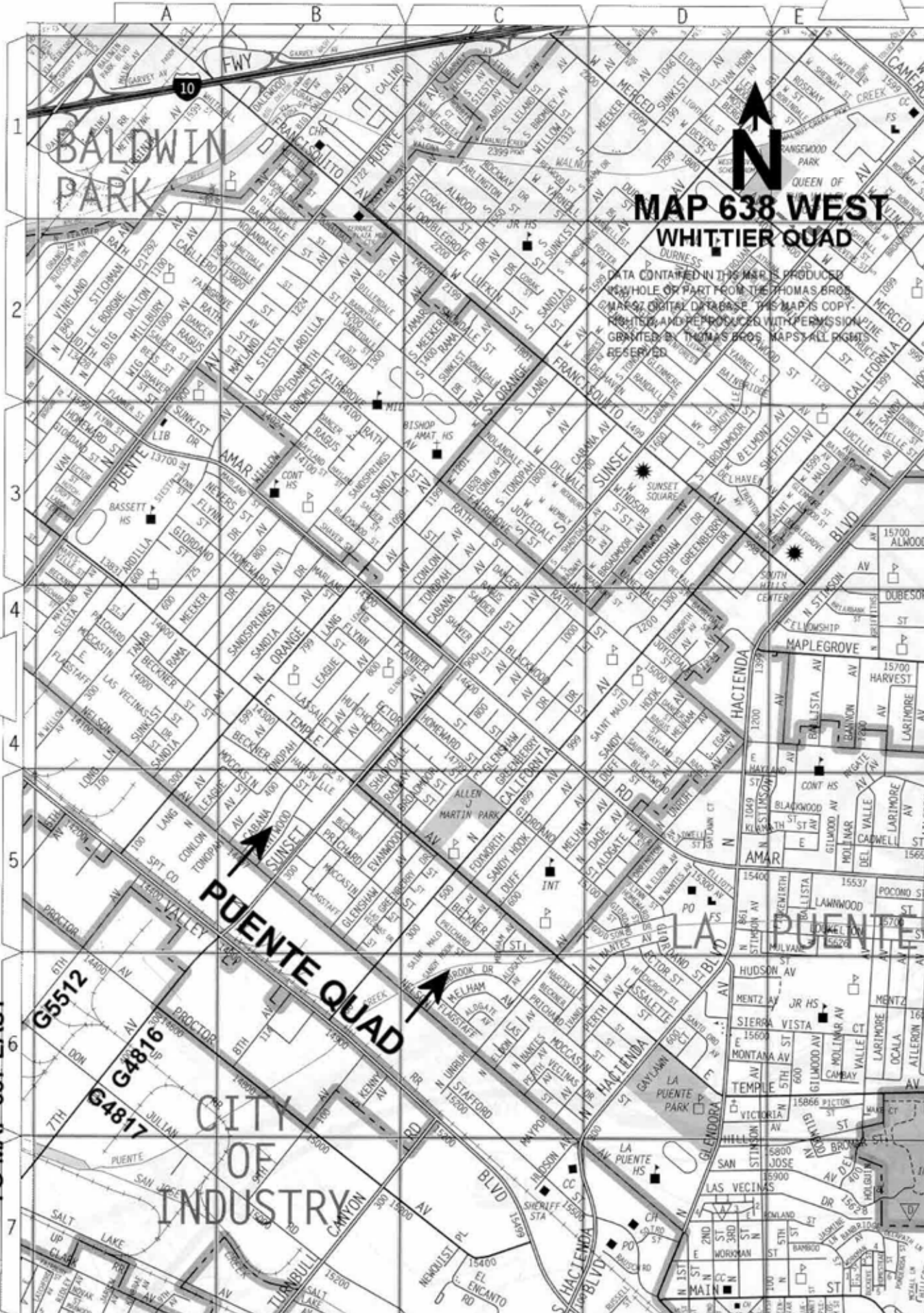
**MAP 637 EAST
WHITTIER QUAD**

DATA CONTAINED IN THIS MAP IS PRODUCED
IN WHOLE OR PART FROM THE THOMAS BROS.
MAPS' DIGITAL DATABASE. THIS MAP IS COPY-
RIGHTED, AND REPRODUCED WITH PERMISSION
GRANTED, BY THOMAS BROS. MAPS. ALL RIGHTS
RESERVED.

PUEENTE QUAD

**ALL BM NUMBERS
WITHOUT A LETTER
PREFIX ARE Y BM'S**





BALDWIN
PARK

**MAP 638 WEST
WHITTIER QUAD**

DATA CONTAINED IN THIS MAP IS PRODUCED
WHOLE OR PART FROM THE THOMAS BROS.
MAPS DIGITAL DATABASE. THIS MAP IS COPY-
RIGHTED AND REPRODUCED WITH PERMISSION
GRANTED BY THOMAS BROS. MAPS. ALL RIGHTS
RESERVED.

PUENTE QUAD

LA PUENTE

**CITY
OF
INDUSTRY**

TO MAP 637 EAST

G5512
G4816
G4817

FWY
10

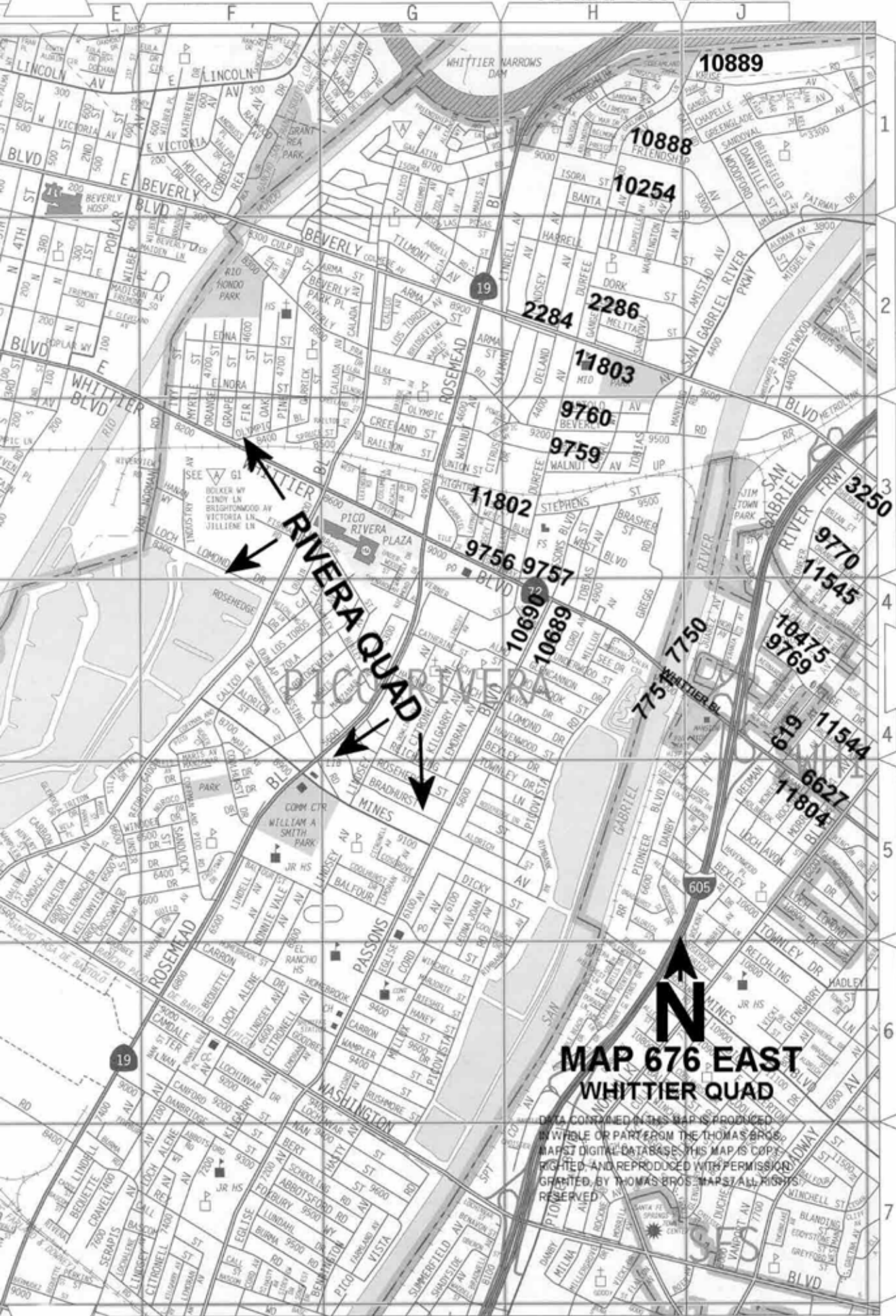


1
2
3
4
4
5
6
7

A B C D E

E

TO MAP 636 EAST



TO MAP 677 WEST

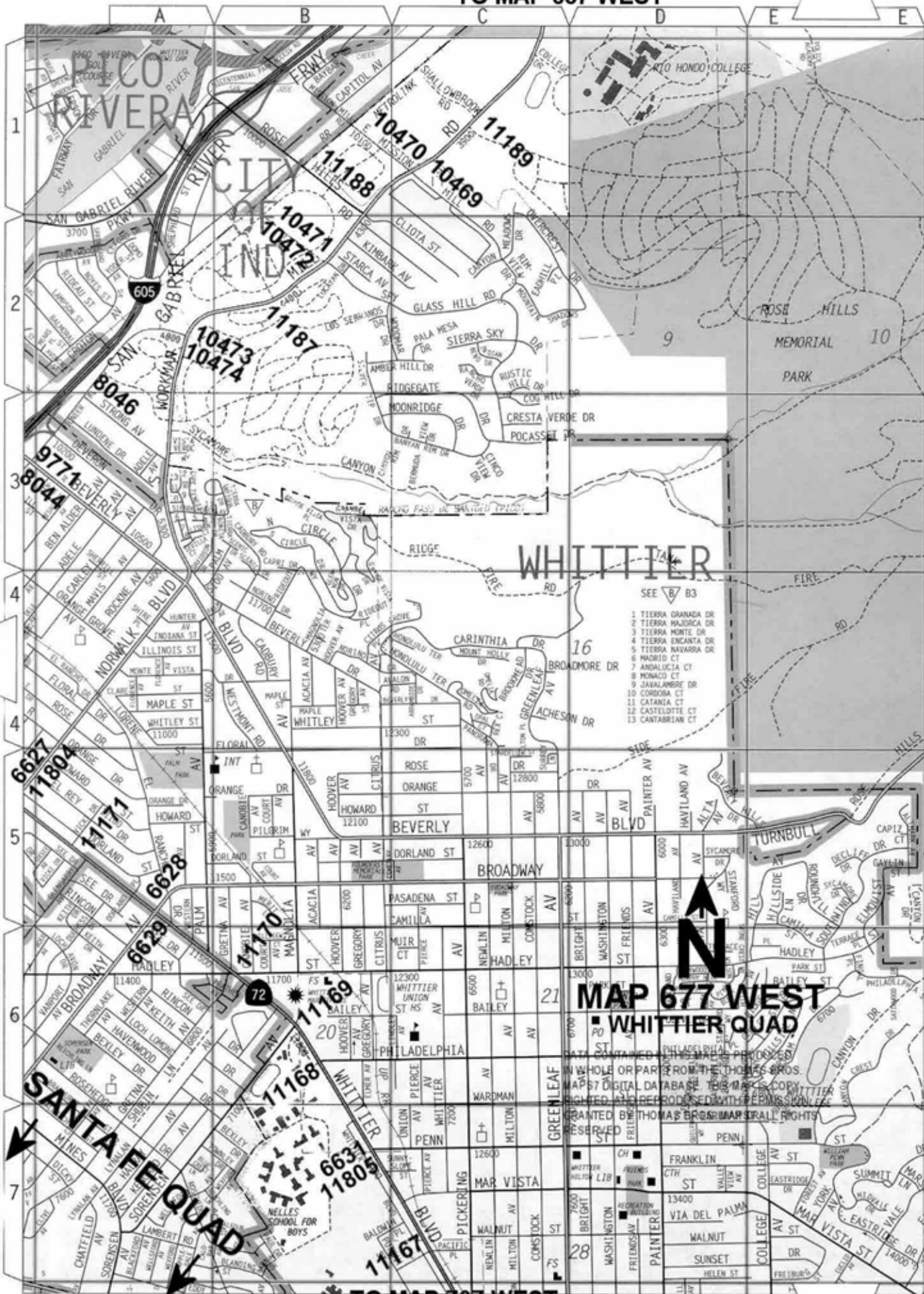
TO MAP 677 WEST

MAP 676 EAST
WHITTIER QUAD

DATA CONTAINED IN THIS MAP IS PRODUCED
IN WHOLE OR PART FROM THE THOMAS BROS.
MAPS DIGITAL DATABASE. THIS MAP IS COPY
RIGHTED AND REPRODUCED WITH PERMISSION
GRANTED BY THOMAS BROS. MAPS. ALL RIGHTS
RESERVED.

TO MAP 637 WEST

TO MAP 676 EAST



TO MAP 677 EAST

TO MAP 677 EAST



PUENTE QUAD

OTTERBREN QUAD

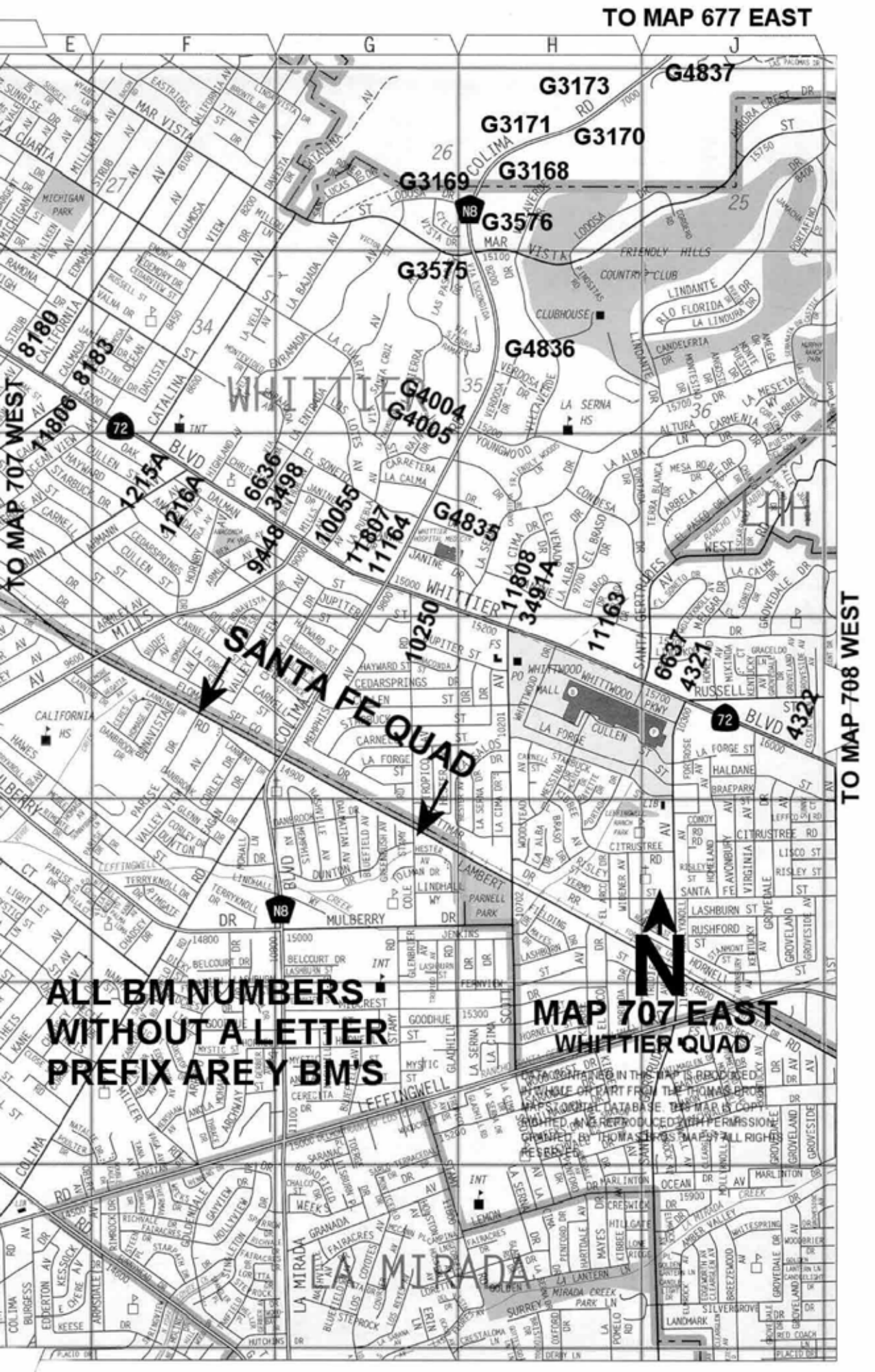
HACIENDA HEIGHTS

MAP 678 WEST WHITTIER QUAD

**ALL BM NUMBERS
WITHOUT A LETTER
PREFIX ARE G BM'S**

DATA CONTAINED IN THIS MAP IS PRODUCED
IN WHOLE OR PART FROM THE THOMAS BROS.
MAPS7 DIGITAL DATABASE. THIS MAP IS COPY-
RIGHTED AND REPRODUCED WITH PERMISSION
GRANTED BY THOMAS BROS. MAPS7 ALL RIGHTS
RESERVED.

TO MAP 708 WEST



TO MAP 708 WEST

SANTA FE BLVD
WHITTIER BLVD



ALL BM NUMBERS WITHOUT A LETTER PREFIX ARE Y BM'S

MAP 707 EAST
WHITTIER QUAD

THIS MAP IS PART OF THE THOMAS MAPS
DATABASE. THIS MAP IS COPYRIGHTED
AND REPRODUCED WITH PERMISSION
BY THOMAS MAPS. ALL RIGHTS RESERVED.

MIRADA

TO MAP 677 WEST



SANTA FE QUAD

**MAP 707 WEST
WHITTIER QUAD**

DATA CONTAINED IN THIS MAP IS PRODUCED IN WHOLE OR PART FROM THE THOMAS BROS BARS7 DIGITAL DATA 6894. THIS MAP IS COPYRIGHTED AND REPRODUCED WITH PERMISSION GRANTED BY THOMAS BROS MAPS. ALL RIGHTS RESERVED.

TO MAP 707 EAST

1

2

3

4

4

5

6

7

A

B

C

D

E

F

6633

4319

3732A

3736A

8192

11766

10257

6635

8449

1212

LOS NIETOS

SANTA FE SPRINGS

LAKELAND

MAP 707 WEST
WHITTIER QUAD

ALL BM NUMBERS WITHOUT A LETTER PREFIX ARE Y BM'S

G2594
G5538
G3715
G5539

G5540
G5541

G1665
G4523

G1666

G4810
G5542
G4112

G5544
G2600
G5543

3472A
17162

9446

11160

3476

3475

72

39

TO MAP 707 EAST

SANTA FE QUAD

OTTERBEIN QUAD



MAP 708 WEST
WHITTIER QUAD

LA MIRADA QUAD

LA CO

DATA CONTAINED IN THIS MAP IS PRODUCED IN WHOLE OR PART FROM THE NATIONAL BROADBAND DIGITAL DATABASE. THIS MAP IS A COPY, UNLESS OTHERWISE INDICATED, AND REPRODUCED WITH PERMISSION OF THE NATIONAL BROADBAND DIGITAL DATABASE. ALL RIGHTS RESERVED.

LA HABRA MARKET PLACE

RYE

EXETER

799

CHESHAM

LA HABRA MARKET PLACE

QUAD YEAR	ELEV FOOT/METER	DESCRIPTION	BM NUMBER
BASELINE (2005)	334.465 101.945	RDBM TAG IN N CB 3M(9.8FT) E/O BCR @ NW COR HACIENDA BLVD & GALE AVE	G 1329
BASELINE (2005)	249.286 75.983	FC BM MON IN NE ABUT OF BRIDGE OVER RIO HONDO RIVER 1M(3.3FT) N/O CF 12.5M(41FT) N/O C/L GARVEY AVE MKD (57-13)	G 1451
BASELINE (2005)	251.401 76.627	FC BM MON IN NW ABUT OF BRIDGE OVER RIO HONDO RIVER 1M(3.3FT) N/O CF 12.5M(41FT) N/O C/L GARVEY AVE MKD (57-11)	G 1452
WHITTIER (2005)	255.901 77.999	RDBM TAG IN W CB DURFEE AVE 600MM(2FT) N/O BCR @ NW COR PECK RD W (RUSH ST)	G 1540
WHITTIER (2005)	402.540 122.695	SM SPK IN N CB 5M(16.4FT) E/O BCR @ NE COR 7TH AVE & PALM AVE	G 1591A
WHITTIER (2005)	446.099 135.971	RDBM TAG IN S CB 26M(85FT) E/O BCR @ NE COR 7TH AVE & LOS ROBLES AVE	G 1594
WHITTIER (2005)	482.366 147.026	L&T IN CONC DRWY TO HSE #15421 NEWTON ST 11M(36FT) N/O C/L & 53M(174FT) E/O C/L LAS LOMITAS DR (13FT W/O E EDGE DRWY)	G 1605
WHITTIER (2005)	595.081 181.381	RDBM TAG IN N CB 300MM(1FT) E/O BCR @ NE COR LOS ALTOS DR & VALLECITO DR	G 1610A
WHITTIER (2005)	521.144 158.845	RDBM TAG IN N CB LOS ALTOS DR & 13.7M(45FT) E/O C/L PROD LA PLATA AVE	G 1612A
WHITTIER (2005)	522.159 159.155	RDBM TAG IN E CB 600MM(2FT) S/O BCR @ SE COR LOS ALTOS DR & LA PLATA AVE	G 1613A
BASELINE (2005)	500.248 152.476	CSBM MON IN S END C. B. 2.4M(7.9FT) S/O BCR @ SE COR LOS ALTOS DR & HACIENDA BLVD (SERV RD) MKD (BM 38-9A 1963 RE 5869)	G 1616
WHITTIER (2005)	422.659 128.827	L&BN IN S CB NEWTON ST 6M(20FT) S/O C/L & 30M(98FT) W/O C/L PROD KWIS AVE 6.5M(21.3FT) W/O WLY MOST DRWY TO NEWTON SCHOOL #15616	G 1619
BASELINE (2005)	407.685 124.263	RDBM TAG IN N CB 300MM(1FT) E/O BCR @ NE COR HACIENDA BLVD & HALLIBURTON RD	G 1623A
BASELINE (2005)	557.068 169.795	L&T IN W END CONC STEP TO OFFICE @ SE COR HACIENDA BLVD & EAST RD 15M(49FT) E/O & 12M(39FT) S/O C/L INT MKD (BM)	G 1665
BASELINE (2005)	514.556 156.837	L&BR IN CONC HDWL 600MM(2FT) S/O N END 6.4M(21FT) E/O C/L HACIENDA BLVD OPP HSE #1705 & 6.4M(21FT) N/O C/L DRWY FOR HSES #1703 & #1705	G 1666
BASELINE (2005)	291.789 88.938	RDBM TAG IN E CB ALLGEYER AVE 300MM(1FT) S/O BCR 6M(20FT) E/O C/L & 20.5M(67.3FT) S/O C/L VALLEY BLVD	G 2282
BASELINE (2005)	282.780 86.192	L&BN IN S CB 1M(3.3FT) E/O BCR @ SE COR GARVEY AVE & MEEKER AVE	G 2317
BASELINE (2005)	278.225 84.803	FC BM MON IN W WINGWALL 22.5M(74FT) N/O C/L GARVEY AVE & 69M(226FT) W/O C/L SAN GABRIEL BLVD MKD (BM 55-24) 34FT N/O CF	G 2537
BASELINE (2005)	264.992 80.770	CSBM MON IN WELL 600MM(2FT) S/O S CF 46M(151FT) E/O BCR & SE COR GARVEY AVE & CENTRAL AVE MKD (12-7 1952 RE 63)	G 2570

QUAD YEAR	ELEV FOOT/METER	DESCRIPTION	BM NUMBER
BASELINE (2005)	499.566 152.268	L&T IN N CB 1M(3.3FT) E/O BCR @ NE COR HACIENDA BLVD & LOS ALTOS DR	G 2581
BASELINE (2005)	522.166 159.157	L&BN IN E CB 600MM(2FT) N/O BCR @ NE COR HACIENDA BLVD & DEL PRADO DR	G 2583
BASELINE (2005)	524.239 159.789	L&BN IN E CB 600MM(2FT) S/O BCR @ SE COR HACIENDA BLVD & DEL PRADO DR	G 2584
BASELINE (2005)	605.169 184.456	RD BM TAG IN NLY CB RICHVIEW DR 6M(20FT) N/O C/L 9.8M(32.2FT) ELY/O BCR & 22M(72FT) ELY/O C/L HACIENDA BLVD	G 2585
BASELINE (2005)	846.832 258.115	L&T IN CONC WALL OF DRAIN 4.6M(15FT) W/O C/L HACIENDA BLVD & 322M(0.2MI) N/O C/L SKYLINE DR	G 2589
BASELINE (2005)	788.194 240.242	CS MON FL IN CONC BASE 136M(445FT) N/O C/L CANADA SOMBRE RD & 9M(30FT) W/O C/L HACIENDA BLVD 3M(10FT) W/O EDGE PVMT (13FT NLY/O PP WITH GUY POLE NO#)	G 2594
BASELINE (2005)	431.587 131.548	L&T IN S CB 300MM(1FT) E/O BCR @ SE COR HACIENDA BLVD & JANINE DR	G 2600
WHITTIER (2005)	490.840 149.608	LS TAG #2698 IN N CB LOS ALTOS DR & 14M(46FT) W/O C/L PROD FRAGANCIA AVE (FROM THE S)	G 2603
BASELINE (2005)	289.635 88.281	RD HD SPK IN N CB 2.5M(8.2FT) W/O BCR @ NW COR LOMITAS AVE & 5TH AVE	G 2980
BASELINE (2005)	404.948 123.429	CSBM MON IN WELL 4M(13FT) N/O BCR @ NE COR HACIENDA BLVD & HALLIBURTON RD MKD (BM 38-11A 1963)	G 3095
BASELINE (2005)	438.521 133.662	CSBM MON IN WELL IN W CB @ BCR NW COR HACIENDA BLVD & TETLEY ST MKD (BM 38-10A 1963 RE 5869)	G 3096
BASELINE (2005)	556.232 169.540	CSBM MON IN E END C. B. 2M(6.5FT) E/O BCR 13M(43FT) S/O C/L COLIMA RD & 18M(59FT) E/O C/L HACIENDA BLVD MKD (38-8A 1963 RE 5869)	G 3097
WHITTIER (2005)	255.981 78.023	RD HD SPK IN W CB RUSH ST 1.5M(5FT) S/O BCR @ SW COR COGSWELL RD	G 3153
WHITTIER (2005)	421.697 128.534	RDBM TAG IN S CB 300MM(1FT) E/O BCR @ SE COR VALLECITO DR & MANZANITA DR	G 3160
WHITTIER (2005)	524.628 159.907	RDBM TAG IN S END C. B. 13M(43FT) E/O C/L COLIMA RD & 311M(0.2MI) N/O C/L MAR VISTA ST (164FT S/O & OPP LITTLE LEAGUE PARK)	G 3168
WHITTIER (2005)	528.854 161.195	RDBM TAG IN S END C. B. 13M(43FT) W/O C/L COLIMA RD & 311M(0.2MI) N/O C/L MAR VISTA ST (164FT S/O & OPP LITTLE LEAGUE PARK)	G 3169
WHITTIER (2005)	583.251 177.775	RDBM TAG E CB OF C/L MEDIAN @ S END C. B. 2M(6.5FT) E/O C/L COLIMA RD & 738M(0.5MI) N/O C/L MAR VISTA ST	G 3170
WHITTIER (2005)	582.217 177.460	RDBM TAG 700MM(2.3FT) W/O CF @ S END C. B. 14M(46FT) W/O C/L COLIMA RD & 738M(0.5MI) N/O C/L MAR VISTA ST	G 3171
WHITTIER (2005)	634.321 193.342	RDBM TAG IN W CB @ S END C. B. 13M(43FT) W/O C/L COLIMA RD & 1.04K(0.6MI) N/O C/L MAR VISTA ST	G 3173

QUAD YEAR	ELEV FOOT/METER	DESCRIPTION	BM NUMBER
WHITTIER (2005)	756.888 230.700	RDBM TAG IN S END C. B. ON C/L MEDIAN 1.5M(5FT) W/O C/L COLIMA RD & 1.65K(1MI) N/O C/L MAR VISTA ST	G 3176
WHITTIER (2005)	755.970 230.420	RDBM TAG IN S END C. B. 700MM(2.3FT) E/O ELY CF 14M(46FT) W/O C/L COLIMA RD & 1.65K(1MI) N/O C/L MAR VISTA ST	G 3177
WHITTIER (2005)	720.199 219.517	RDBM TAG IN SW COR C. B. 1.5M(5FT) E/O C/L COLIMA RD C/L MEDIAN & 21.5M(70.5FT) N/O C/L SKYLINE DR (@ N END PKWY DRAIN)	G 3181
WHITTIER (2005)	711.226 216.782	RDBM TAG IN W CB COLIMA RD 13M(43FT) W/O C/L & 67M(220FT) N/O C/L SKYLINE DR (@ N END PKWY DRAIN)	G 3182
WHITTIER (2005)	665.624 202.883	RDBM TAG IN SE COR C. B. 13.4M(44FT) E/O C/L COLIMA RD & 21M(69FT) N/O C/L PROD CAMINO DEL SUR	G 3183
WHITTIER (2005)	643.407 196.111	RDBM TAG SE COR OF VAULT 3M(9.8FT) E/O ELY CF COLIMA RD 15.5M(51FT) E C/L & 49M(161FT) S/O C/L PROD AVOCADO HILL WAY (PVT RD) 15M(49FT) S/O F HYD	G 3184
WHITTIER (2005)	595.653 181.556	RDBM TAG IN C. B. 1.5M(5FT) NLY OF C/L COLIMA RD & 24.4M(80FT) W/O C/L VIEWFIELD AVE	G 3185
WHITTIER (2005)	551.943 168.233	RDBM TAG IN W END C. B. 13M(42.7FT) S/O C/L COLIMA RD & 59M(194FT) E/O C/L AVALO DR (44.5M(146FT) E/O BCR SE COR)	G 3188
WHITTIER (2005)	551.425 168.075	L&BN IN S CB COLIMA RD 12M(39FT) S/O C/L & 109M(357FT) W/O C/L HACIENDA BLVD (72FT W/O C/L ELY MOST DRWY TO SHOPPING AREA)	G 3189
WHITTIER (2005)	567.801 173.066	L&BN IN CONC WALL OF DRAIN @ SW COR AVOCADO TERRACE & LAS TUNAS DR 8M(26FT) S/O & 6.7M(22FT) W/O C/L INT NR CH LINK FENCE MKD (BM)	G 3213
WHITTIER (2005)	632.554 192.803	L&T 600MM(2FT) FROM END CB OF PLANTER NLY SIDE PVT DR TO HSE #2400 TURNBULL CYN RD & 22M(72FT) N/O C/L PROD AVOCADO TERRACE DR	G 3216
WHITTIER (2005)	478.042 145.708	L&BN IN S CB 300MM(1FT) W/O BCR @ SW COR COLIMA RD & MAR VISTA ST MKD (BM)	G 3575
WHITTIER (2005)	477.952 145.680	L&BN IN N CB 3M(10FT) W/O BCR @ NW COR COLIMA RD & MAR VISTA ST MKD (BM)	G 3576
BASELINE (2005)	259.838 79.199	L&BN IN N CB 3.5M(11.5FT) W/O BCR @ NW COR GARVEY AVE & MERCED AVE MKD (BM)	G 3660
BASELINE (2005)	260.615 79.436	L&SPK IN N CB 3.5M(11.5FT) E/O BCR @ NE COR GARVEY AVE & MERCED AVE	G 3661
BASELINE (2005)	267.003 81.383	RD HD SPK IN S CB 2M(6.5FT) E/O BCR @ SE COR GARVEY AVE & CENTRAL AVE	G 3662
BASELINE (2005)	269.921 82.272	RD HD SPK IN W CB 1.5M(5FT) S/O BCR @ SW COR TYLER AVE & GARVEY AVE	G 3664
BASELINE (2005)	291.866 88.961	L&T IN S CB VALLEY BLVD 300MM(1FT) W/O BCR 12M(39.4FT) S/O C/L & 19M(62.3FT) W/O C/L ALLGEYER AVE	G 3698

QUAD YEAR	ELEV FOOT/METER	DESCRIPTION	BM NUMBER
BASELINE (2005)	301.053 91.761	FC MON FL IN E ABUT OF BRIDGE OVER SAN GABRIEL RIVER 13.5M(44.3FT) S/O C/L VALLEY BLVD & 17.5M(57.4FT) W/O ON RAMP S BOUND (605 FWY)	G 3699
BASELINE (2005)	374.028 114.004	RDBM TAG IN E CB 1M(3.3FT) S/O BCR @ SE COR 4TH AVE & LOMITAS AVE	G 3702
BASELINE (2005)	360.667 109.932	RDBM IN CB @ CTR CUL DE SAC (SERV RD) 21.5M(70.5FT) N/O C/L GALE AVE & 22.5M(74FT) E/O C/L 7TH AVE	G 3703
BASELINE (2005)	328.889 100.246	RDBM TAG IN E CB 600MM(2FT) S/O BCR @ SE COR GALE AVE & VALENCIA AVE	G 3704
BASELINE (2005)	556.247 169.545	RDBM TAG IN N CB 11M(36FT) E/O BCR @ NE COR HACIENDA BLVD & COLIMA RD	G 3712
BASELINE (2005)	716.659 218.438	L&BN IN CONC FTG 300MM(1FT) N/O S END BRICK WALL @ NW COR PVT RD @ #2231 HACIENDA BLVD 10.7M(35FT) W/O & 8M(26FT) N/O C/L INT (465FT S/O C/L CANADA SOMBRE RD)	G 3715
BASELINE (2005)	328.339 100.078	RDBM TAG S CB 10.5M(34.4FT) W/O BCR @ SW COR GALE AVE & TURNBULL CYN RD	G 3975
WHITTIER (2005)	232.585 70.892	L&T IN N CB RET 300MM(1FT) E/O BCR @ NW COR ROSEMEAD BLVD & RUSH ST	G 3988
WHITTIER (2005)	236.021 71.939	RDBM TAG IN S CB 300MM(1FT) W/O BCR @ SW COR RUSH ST & CHICO AVE	G 3990
WHITTIER (2005)	241.703 73.671	L&T IN N CB RET 300MM(1FT) E/O BCR @ NW COR RUSH ST & POTRERO AVE	G 3992
WHITTIER (2005)	241.964 73.751	L&T IN W END CB 450MM(1.5FT) E/O BCR @ NE COR RUSH ST & POTRERO AVE	G 3993
WHITTIER (2005)	247.427 75.416	L&T IN CB RET 2M(6.5FT) E/O BCR @ NW COR RUSH ST & MERCED AVE	G 3994
WHITTIER (2005)	247.272 75.369	LACO ENG TAG IN CB RET 2M(6.5FT) W/O BCR @ SE COR RUSH ST & MERCED AVE	G 3995
WHITTIER (2005)	251.247 76.580	L&T IN N CB 3M(10FT) E/O BCR @ NE COR RUSH ST & & CENTRAL AVE	G 3996
WHITTIER (2005)	253.015 77.119	RDBM TAG NR W END C. B. 600MM(2FT) E/O BCR @ NE COR RUSH ST & SANTA ANITA AVE	G 3997
WHITTIER (2005)	269.892 82.263	L&T IN E CB 2M(6.5FT) N/O BCR @ NE COR TYLER AVE & KLINGERMAN ST	G 3999
WHITTIER (2005)	268.918 81.966	RDBM TAG IN E CB 600MM(2FT) S/O BCR @ SE COR TYLER AVE & ELLIOTT AVE	G 4000
WHITTIER (2005)	348.529 106.232	L&BN IN E CB 300MM(1FT) S/O BCR @ SE COR YOUNGWOOD DR & COLIMA RD MKD (BM)	G 4005
WHITTIER (2005)	504.834 153.874	RDBM TAG IN ELY CB ORANGE GROVE AVE 300MM(1FT) N/O BCR @ NE COR LAS TUNAS DR	G 4007

QUAD YEAR	ELEV FOOT/METER	DESCRIPTION	BM NUMBER
WHITTIER (2005)	235.307 71.722	RDBM TAG IN CB RET 600MM(2FT) E/O BCR @ SW COR ROSEMEAD BLVD & KLINGERMAN ST	G 4009
WHITTIER (2005)	235.448 71.765	RDBM TAG IN W CB 1M(3.3FT) N/O BCR @ NW COR ROSEMEAD BLVD & KLINGERMAN ST	G 4010
WHITTIER (2005)	239.854 73.108	RDBM TAG IN W CB 600MM(2FT) S/O BCR @ SW COR ROSEMEAD BLVD & FERN ST	G 4011
WHITTIER (2005)	240.285 73.239	RDBM TAG IN N CB 600MM(2FT) W/O BCR @ NW COR ROSEMEAD BLVD & FERN ST	G 4012
BASELINE (2005)	242.494 73.912	RDBM TAG E END C. B. 13.5M(44FT) W/O BCR @ NW COR GARVEY AVE & ROSEMEAD BLVD	G 4049
BASELINE (2005)	252.579 76.986	CSBM MON IN WELL 300MM(1FT) W/O W CF 12.5M(41FT) S/O BCR @ SW COR GARVEY AVE & POTRERO AVE MKD (BM 12-8A 1971 RE 7078)	G 4051
BASELINE (2005)	282.474 86.098	L&BR IN CB RET 2M(6.5FT) E/O BCR @ SW COR GARVEY AVE & MEEKER AVE	G 4052
BASELINE (2005)	291.026 88.705	CSBM MON IN W END C. B. 1M(3.3FT) E/O BCR 13.5M(44FT) N/O C/L GARVEY AVE & 30M(98FT) E/O C/L VALLEY BLVD MKD (BM 12-5A 1971 RE 7078)	G 4053
BASELINE (2005)	293.873 89.573	RDBM TAG IN WLY CB 600MM(2FT) SLY/O BCR 23M(75.5FT) WLY C/L DURFEE AVE & 24.5M(80.4FT) SLY/O C/L VALLEY BLVD	G 4054
BASELINE (2005)	279.506 85.194	LL&T IN S CB 6M(20FT) S/O C/L DON JULIAN RD & 45.4M(149FT) E/O C/L PROD SANTA MARIANA AVE 4M(13FT) W/O C/L FC CHANNEL	G 4057
BASELINE (2005)	279.515 85.196	RDBM TAG IN W END C. B. 6M(20FT) N/O C/L DON JULIAN RD & 70M(230FT) E/O C/L SANTA MARIANA AVE 11.5M(37.7FT) E/O C/L FC CHANNEL	G 4058
BASELINE (2005)	343.150 104.592	L&T IN N CB LOMITAS AVE 10M(33FT) E/O BCR 6M(20FT) N/O C/L & 31M(102FT) E/O C/L WORKMAN MILL RD	G 4060
BASELINE (2005)	324.712 98.973	L&T IN W CB 300MM(1FT) S/O BCR @ SWLY COR 7TH AVE & CLARK AVE	G 4062
BASELINE (2005)	327.547 99.837	CSBM MON IN N END C. B. 34M(111.5FT) S/O BCR @ SWLY COR 7TH AVE & CLARK AVE MKD (42-3C 1971 RE 7078)	G 4063
BASELINE (2005)	364.143 110.991	CSBM MON IN N END C. B. 2.5M(8.2FT) S/O BCR @ SELY COR 20M(65.6FT) S/O C/L GALE AVE & 13.5M(44FT) E/O C/L 7TH AVE MKD (BM 42-4A 1971 RE 7078)	G 4065
BASELINE (2005)	334.964 102.097	CSBM MON IN E END C. B. 1M(3.3FT) W/O BCR @ NW COR GALE AVE & 9TH AVE MKD (BM 42-5-B 1971 RE 7078)	G 4066
BASELINE (2005)	328.149 100.020	CSBM IN S END C. B. 2.5M(8.2FT) N/O BCR IN RET @ SW COR GALE AVE & TURNBULL CYN RD 18M(59FT) S/O & 10.5M(34FT) W/O C/L INT MKD (42-5C 1971)	G 4068
BASELINE (2005)	329.750 100.508	CSBM MON IN E END C. B. 17M(56FT) E/O BCR @ SE COR GALE AVE & KWIS AVE MKD (BM 42-6A 1971 RE 7078)	G 4069

QUAD YEAR	ELEV FOOT/METER	DESCRIPTION	BM NUMBER
BASELINE (2005)	331.735 101.113	RDBM TAG IN CONC WK 1M(3.3FT) S/O S CF 59M(194FT) W/O BCR 73M(240FT) W/O C/L FARMSTEAD AVE & 10.4M(34FT) N/O C/L GALE AVE (@ W END OF BRIDGE OVER FC CHANNEL)	G 4070
BASELINE (2005)	331.014 100.893	L&T IN CONC WK 300MM(1FT) N/O CF 10.5M(34.4FT) N/O C/L GALE AVE & 69M(226FT) W/O C/L PROD FARMSTEAD AVE (@ W END OF BRIDGE OVER FC CHANNEL)	G 4071
BASELINE (2005)	605.915 184.683	CSBM MON IN N END C. B. 12.5M(41FT) W/O C/L HACIENDA BLVD & 12M(39FT) S/O C/L PROD RICHVIEW DR MKD (BM 38-7A 1975 RE 7078)	G 4107
BASELINE (2005)	816.173 248.770	L&BN IN NE COR HDWL 6M(20FT) W/O C/L HACIENDA BLVD & 351M(0.2MI) N/O SKYLINE DR	G 4109
BASELINE (2005)	494.863 150.835	RDBM TAG IN S CB W END C. B. 10M(32.8FT) E/O BCR @ SE COR HACIENDA BLVD & AVOCADO CREST RD	G 4112
BASELINE (2005)	294.315 89.707	RDBM TAG IN E CB 600MM(2FT) S/O BCR SE COR DURFEE AVE & VALLEY BLVD	G 4434
WHITTIER (2005)	495.281 150.962	RDBM TAG IN ELY CB 1.5M(5FT) NLY BCR 16M(52.5FT) N/O C/L TURNBULL CYN RD & 5.5M(18FT) E/O C/L ORANGE GROVE AVE	G 4483
WHITTIER (2005)	396.655 120.901	L&BR IN E CB @ C. B. 3.7M(12FT) S/O C/L DRWY TO HSE #1552 TURNBULL CYN RD N/O VALLECITO DR	G 4485
WHITTIER (2005)	401.824 122.476	RDBM TAG IN W CB 1.5M(5FT) N/O BCR @ NW COR 7TH AVE & PALM AVE	G 4487
WHITTIER (2005)	272.039 82.918	RDBM TAG IN E CB DURFEE AVE 600MM(2FT) S/O BCR @ SE COR KLINGERMANN ST	G 4488
WHITTIER (2005)	276.599 84.308	RDBM TAG IN E CB DURFEE AVE @ N END C. B. & 10M(33FT) S/O C/L PROD MOREHOUSE ST	G 4489
WHITTIER (2005)	285.731 87.091	RDBM TAG W CB DURFEE AVE 600MM(2FT) S/O BCR @ SW COR MAGNOLIA ST	G 4490
WHITTIER (2005)	250.312 76.295	RDBM TAG IN S CB 300MM(1FT) W/O BCR @ SW COR RUSH ST & CENTRAL AVE	G 4494
WHITTIER (2005)	260.793 79.490	RDBM TAG IN SLY CB RUSH ST 300MM(1FT) W/O BCR @ SW COR TYLER AVE	G 4495
WHITTIER (2005)	261.020 79.559	RDBM TAG IN NLY CB RUSH ST 1.5M(5FT) E/O BCR @ NE COR TYLER AVE	G 4496
WHITTIER (2005)	269.035 82.002	RDBM TAG IN W CB 1.5M(5FT) N/O BCR @ NW COR TYLER AVE & ELLIOTT AVE	G 4497
BASELINE (2005)	554.820 169.110	L&T IN S END C. B. @ BCR 18M(59FT) E/O C/L HACIENDA BLVD & 5.5M(18FT) N/O C/L EAST RD	G 4523
WHITTIER (2005)	254.750 77.648	L&T IN E CB DURFEE AVE 2.7M(9FT) S/O BCR @ SE COR RUSH ST	G 4568
WHITTIER (2005)	428.694 130.666	L&SPK IN S CB 300MM(1FT) E/O BCR @ SE COR TURNBULL CYN RD & LA MESITA DR	G 4570

QUAD YEAR	ELEV FOOT/METER	DESCRIPTION	BM NUMBER
WHITTIER (2005)	484.776 147.760	L&BR IN WLY CB LAS LOMITAS DR 8M(26FT) SLY/O C/L PROD NEWTON ST	G 4571
BASELINE (2005)	373.159 113.739	L&BR IN CB RET 5.8M(19FT) S/O BCR @ NW COR LOMITAS AVE & 3RD AVE	G 4578
BASELINE (2005)	341.919 104.217	L&T IN E CB 300MM(1FT) E/O BCR @ NE COR LOMITAS AVE & WORKMAN MILL RD	G 4579
BASELINE (2005)	276.456 84.264	DPW BM TAG IN E CB 300MM(1FT) S/O BCR @ NE COR PECK RD & GARVEY AVE	G 4582
BASELINE (2005)	270.320 82.394	DPW BM TAG IN S CB 2M(6.5FT) E/O BCR @ SE COR GARVEY AVE & TYLER AVE	G 4592
BASELINE (2005)	441.084 134.443	DPW BM TAG IN S CB 300MM(1FT) W/O BCR @ SW COR HACIENDA BLVD & TETLEY ST	G 4633
WHITTIER (2005)	556.878 169.737	DPW BM TAG IN S CB 600MM(2FT) E/O BCR @ SE COR COLIMA RD & AVALO DR	G 4794
WHITTIER (2005)	743.637 226.661	LS TAG #3785 IN S CB 300MM(1FT) W/O BCR @ SW COR COLIMA RD & CASINO DR	G 4796
WHITTIER (2005)	610.627 186.120	RDBM TAG IN N CB LAS LOMITAS DR 600MM(2FT) E/O BCR @ NE COR TURNBULL CYN RD	G 4800
WHITTIER (2005)	612.699 186.751	DPW BM TAG IN S CB 6.4M(21FT) S/O C/L LAS LOMITAS DR & 6M(19.7FT) E/O C/L PROD TURNBULL CYN RD	G 4801
WHITTIER (2005)	599.187 182.633	DPW BM TAG IN W CB 6.7M(22FT) S/O BCR @ SW COR LOS ALTOS DR & VALLECITO DR	G 4803
BASELINE (2005)	496.633 151.374	DPW BM TAG IN CONC HDWL 150MM(0.5FT) S/O N END 7M(23FT) W/O C/L HACIENDA BLVD & 14M(46FT) N/O C/L PROD WEST RD (3.3FT S/O PP NO#)	G 4810
BASELINE (2005)	687.276 209.482	DPW BM TAG IN E CB HACIENDA BLVD @ LT STD 17M(56FT) E/O C/L & 144M(472FT) S/O C/L GLENMARK DR (OPP EQUESTRIAN CROSSING UNDERPASS)	G 4811
BASELINE (2005)	469.339 143.055	L&T IN W CB N END C. B. 1.5M(5FT) S/O BCR @ SW COR LA SUBIDA DR & HACIENDA BL	G 4812
BASELINE (2005)	343.973 104.843	DPW BM TAG IN E CB HACIENDA BLVD 13M(43FT) E/O C/L & 8M(26FT) S/O C/L OF W BOUND OFF-RAMP (60 FRWY)	G 4814
BASELINE (2005)	295.146 89.961	DPW BM TAG IN W CB 1M(3.3FT) S/O BCR @ SW COR 7TH AVE & DON JULIAN RD	G 4816
BASELINE (2005)	295.275 90.000	DPW BM TAG IN E CB 1M(3.3FT) S/O BCR @ SE COR 7TH AVE & DON JULIAN RD	G 4817
BASELINE (2005)	288.984 88.083	CSBM MON FL 300MM(1FT) W/O CF 5TH AVE 2.5M(8.2FT) N/O BCR 6.5M(21.3FT) W/O C/L & 16M(52.5FT) N/O C/L LOMITAS AVE MKD (BM 42-2B 1971 RE 7078)	G 4818
BASELINE (2005)	304.658 92.860	L&BR IN SW CB RET 600MM(2FT) N/O BCR 13M(42.7FT) W/O C/L WORKMAN MILL RD & 13M(42.7FT) S/O C/L DON JULIAN RD	G 4819

QUAD YEAR	ELEV FOOT/METER	DESCRIPTION	BM NUMBER
BASELINE (2005)	297.433 90.658	L&BR IN S CB DON JULIAN RD 6M(20FT) S/O C/L ON C/L PROD COBERTA AVE	G 4820
BASELINE (2005)	294.875 89.878	DPW BM TAG IN W CB SAN ANGELO AVE 1M(3.3FT) S/O BCR 6M(20FT) W/O C/L & 21M(69FT) S/O C/L VALLEY BLVD	G 4821
BASELINE (2005)	294.809 89.858	DPW BM TAG IN S CB VALLEY BLVD 1M(3.3FT) E/O BCR 14M(46FT) S/O C/L & 17.5M(57.4FT) E/O C/L OFF-RAMP (605 FRWY N)	G 4822
BASELINE (2005)	300.371 91.553	FFC BM MON IN SW ABUT OF BRIDGE OVER SAN GABRIEL RIVER 1.5M(5FT) S/O CF VALLEY BLVD 14M(46FT) S/O C/L & 5M(16.4FT) E/O C/L LEVEE ACCESS DRWY MKD (BM 078-04865 1968)	G 4823
BASELINE (2005)	287.868 87.742	DPW BM TAG IN S CB 2M(6.5FT) W/O BCR @ SW COR MOUNTAIN VIEW RD & GARVEY AVE	G 4824
BASELINE (2005)	266.969 81.372	L&T IN S CB 2.5M(8FT) E/O BCR @ SE COR GARVEY AVE & LEXINGTON AVE	G 4825
BASELINE (2005)	252.841 77.066	DPW BM TAG IN N CB 3M(10FT) W/O BCR @ NW COR GARVEY AVE & POTERO AVE	G 4826
BASELINE (2005)	247.071 75.307	L&T IN N CB (DEP) GARVEY AVE ON C/L PROD CHICO AVE	G 4827
BASELINE (2005)	242.956 74.053	ARMY CORP OF ENG MON IN N CB 15M(49FT) E/O BCR @ NE COR GARVEY AVE & ROSEMEAD BLVD MKD (WS 118 1981 LADO) @ E END C. B.	G 4828
BASELINE (2005)	246.633 75.174	L&SPK IN W CB 9.5M(31FT) N/O BCR @ NW COR GARVEY AVE & ROSEMEAD PL	G 4829
BASELINE (2005)	249.154 75.942	DPW BM TAG IN N CB 1M(3.3FT) W/O BCR @ NW COR GARVEY AVE & IVAR AVE	G 4830
BASELINE (2005)	250.628 76.392	DPW BM TAG IN N CB 3M(10FT) W/O BCR @ NW COR GARVEY AVE & MUSCATEL AVE	G 4831
BASELINE (2005)	260.123 79.286	L&BR IN CB RET 3M(10FT) W/O BCR @ NE COR GARVEY AVE & WALNUT GROVE	G 4832
BASELINE (2005)	260.711 79.465	DPW BM TAG IN N CB 1M(3.3FT) W/O BCR @ NW COR GARVEY AVE & WALNUT GROVE	G 4833
BASELINE (2005)	266.132 81.117	L&BR IN N CB GARVEY AVE & 9M(29.5FT) E/O C/L PROD DELTA AV	G 4834
WHITTIER (2005)	290.142 88.436	L&BR IN E CB 5.5M(18FT) S/O BCR @ SE COR COLIMA RD & LA CALMA DR	G 4835
WHITTIER (2005)	440.066 134.133	DPW BM TAG IN E CB 7M(23FT) N/O C/L DRWY TO HSE #8404 COLIMA RD & 165M(541FT) N/O C/L VERDOSA DR	G 4836
WHITTIER (2005)	700.306 213.454	DPW BM TAG IN W CB COLIMA RD 13M(43FT) W/O C/L & 1.37K(0.9MI) N/O MAR VISTA ST (1FT N/O N END C B)	G 4837
WHITTIER (2005)	738.982 225.242	L&LS TAG #3785 IN W CB 300MM(1FT) N/O BCR @ NW COR COLIMA RD & CASINO DR	G 4838

QUAD YEAR	ELEV FOOT/METER	DESCRIPTION	BM NUMBER
WHITTIER (2005)	415.234 126.564	L&BR IN W END CONC HDWL 2.6M(8.5FT) N/O N CF 27M(89FT) E/O BCR @ NE COR NEWTON ST & WICKSHIRE AVE	G 4839
WHITTIER (2005)	415.550 126.660	L&BN IN N CB 600MM(2FT) W/O BCR @ NW COR NEWTON ST & LYNBROOK AVE	G 4840
WHITTIER (2005)	455.184 138.741	L&T IN S CB SHEFFORD ST 300MM(1FT) E/O BCR @ SE COR LAS LOMITAS DR	G 4842
WHITTIER (2005)	424.481 129.382	L&T IN E CB 300MM(1FT) S/O BCR @ SE COR VALLECITO DR & MANZANITA DR	G 4843
WHITTIER (2005)	398.866 121.575	L&BR IN ELY CB TURNBULL CYN RD @ N END DRWY TO HSE #1604 5M(16FT) ELY/O C/L & 8M(26FT) SLY/O C/L PROD TURNBULL CYN RD FROM W	G 4844
WHITTIER (2005)	492.077 149.986	LACO DPW TAG IN SLY CB TURNBULL CYN RD 6M(20FT) S/O C/L & 13.4M(44FT) E/O C/L PROD SEMI TAN ORANGE GROVE AVE	G 4845
WHITTIER (2005)	623.275 189.975	L&BR IN E END C. B. 300MM(1FT) N/O NLY CF TURNBULL CYN RD 6.4M(21FT) N/O C/L & 8M(26.2FT) W/O C/L PROD LOS ALTOS DR	G 4847
WHITTIER (2005)	263.747 80.390	L&T IN SW CB RET 600MM(2FT) N/O BCR @ SW COR DURFEE AVE & FINEVIEW ST	G 4848
WHITTIER (2005)	272.701 83.120	DPW BM TAG IN S CB KLINGERMAN ST 1M(3.3FT) E/O BCR @ SE COR DURFEE AVE	G 4849
WHITTIER (2005)	251.806 76.751	DPW BM TAG IN S CB 1M(3.3FT) W/O BCR @ SW COR RUSH ST & SANTA ANITA AVE	G 4850
WHITTIER (2005)	232.577 70.890	40MM(1-1/2 IN) DISC WITH BR IN N CB 300MM(1FT) W/O BCR @ NW COR RUSH ST & ROSEMEAD BLVD MKD (RANDOM 01-09-90H)	G 4851
WHITTIER (2005)	789.641 240.683	LACO BM TAG IN W CB COLIMA RD 12.6M(41FT) W/O C/L & 2K(1.2MI) N/O C/L MAR VISTA ST (@ MI MKR 1.25)	G 5213
WHITTIER (2005)	490.920 149.633	LACO BM TAG IN E CB @ N END C. B. @ SE COR FRAGANCIA AVE & LOS ALTOS DR 14M(46FT) S/O & 5.5M(18FT) E/O C/L INT	G 5214
WHITTIER (2005)	629.805 191.965	LACO BM TAG IN W CB 1M(3.3FT) N/O BCR @ NW COR LOS ALTOS DR & SELINDA DR	G 5215
WHITTIER (2005)	625.741 190.726	L&T IN E END C. B. 6.3M(20.7) S/O C/L TURNBULL CYN RD & 16M(52.5FT) W/O C/L LOS ALTOS DR	G 5216
WHITTIER (2005)	565.092 172.241	LACO BM TAG IN CONC DRWY @ NW COR HSE #2030 AVOCADO TERRACE & 4M(13FT) N/O C/L PROD LAS TUNAS DR	G 5217
WHITTIER (2005)	421.510 128.477	LACO BM TAG IN N CB 300MM(1FT) W/O BCR @ NW COR NEWTON ST & KIWI AVE	G 5218
WHITTIER (2005)	232.895 70.987	L&T IN N CB @ W END C. B. 300MM(1FT) E/O BCR @ NE COR ROSEMEAD BLVD & RUSH ST	G 5221
WHITTIER (2005)	236.394 72.053	LACO BM TAG IN S CB @ E END C. B. 1.5M(5FT) E/O BCR @ SE COR RUSH ST & CHICO AVE	G 5222

QUAD YEAR	ELEV FOOT/METER	DESCRIPTION	BM NUMBER
WHITTIER (2005)	266.177 81.131	L&T IN W CB TYLER AVE NR C/L PROD FINEVIEW ST	G 5223
BASELINE (2005)	294.959 89.904	LACO BM TAG IN E CB 1.5M(5FT) N/O BCR @ NE COR VALLEY BLVD & TEMPLE AVE	G 5231
BASELINE (2005)	290.685 88.601	L&LS#6711 TAG IN S CB 1M(3.3FT) W/O BCR @ SW COR GARVEY AV & VALLEY BL 12M(42FT) S/O & 20M(65.6FT) W/O C/L INT	G 5458
BASELINE (2005)	291.575 88.872	LACO BM TAG IN CB 300MM(1FT) W/O BCR @ SW COR VALLEY BL & RUMFORD AV	G 5506
BASELINE (2005)	295.274 90.000	DPW BM TAG 1.8M(6FT) S/O CF @ B/W @ SW COR VALLEY BL & TEMPLE AV	G 5507
BASELINE (2005)	287.112 87.512	L&T IN W CB 1.8M(6FT) N/O BCR @ SW COR SAN ANGELO AV & PROCTOR ST	G 5508
BASELINE (2005)	305.723 93.185	L&DPW TAG IN S CB 300MM(1FT) E/O BCR @ SE COR DON JULIAN RD & WORKMAN MILL RD	G 5509
BASELINE (2005)	377.701 115.124	L&T IN CB @ MC @ NW COR LOMITAS AV & 4TH AV	G 5510
BASELINE (2005)	290.211 88.457	L&DPW TAG IN N CB 600MM(2FT) W/O BCR @ NW COR LOMITAS AV & 6TH ST	G 5511
BASELINE (2005)	293.390 89.426	SM PK NAIL IN E CB 300MM(1FT) N/O BCR @ NE COR 6TH ST & DON JULIAN RD	G 5512
BASELINE (2005)	287.911 87.756	L&T IN E CB 1.8M(6FT) N/O BCR @ NE COR SAN ANGELO AV & PROCTOR ST	G 5513
BASELINE (2005)	300.780 91.678	BR CAP MKD (L-8R) IN W CB @ SW COR OF BRIDGE OVER SAN JOSE CREEK (@ 7TH AV)	G 5514
BASELINE (2005)	320.606 97.721	L&RCE#20198 TAG 600MM(2FT) S/O BCR @ NW COR CLARK AV & 7TH AV	G 5515
BASELINE (2005)	361.075 110.056	L&T W CB 3M(10FT) S/O BCR @ NW COR 7TH AV & GALE AV	G 5516
BASELINE (2005)	353.216 107.661	L&T IN S CB @ BCR MEDIAN SERVICE RD @ NW COR GALE AV & LATCHFORD AV	G 5517
BASELINE (2005)	352.544 107.456	L&T IN N CB SERVICE MEDIAN 900MM(3FT) E/O BCR @ NE COR LATCHFORD AV & GALE AV	G 5518
BASELINE (2005)	333.015 101.503	L&T @ CTR CURB RETURN @ NE COR GALE AV 9TH AV	G 5519
BASELINE (2005)	331.479 101.035	L&LADPW TAG IN N CB GALE AV 15.8M(52FT) W/O C/L PROD GALEMONT AV	G 5520
BASELINE (2005)	275.868 84.085	L&DPW BM TAG 300MM(1FT) W/O BCR @ NW COR SAN GABRIEL BL & GARVY AV	G 5530
BASELINE (2005)	266.803 81.322	L&LS#6771 TAG 900MM(3FT) W/O BCR @ NW COR GARVY AV & SANTA ANITA AV	G 5531

QUAD YEAR	ELEV FOOT/METER	DESCRIPTION	BM NUMBER
BASELINE (2005)	900.515 274.478	L&BM TAG @ SW COR HACIENDA BL & SKYLINE DR (W) ON BASE OF TRAFFIC SIGNAL	G 5537
BASELINE (2005)	747.448 227.823	L&BM TAG @ NE COR HACIENDA BL & CANADA SOMBRE RD ON SE COR CONC STRUCTURE W/MH	G 5538
BASELINE (2005)	668.820 203.857	L&BM TAG @ NE COR HACIENDA BL & REPOSADO DR IN CONC HDWL	G 5539
BASELINE (2005)	599.513 182.732	L&BM TAG IN CB 1.5M(5FT) W/O BCR OF EXIT TO "THE PARK" +/-61M(200FT) S/O & 12.2M(40FT) W/O C/L INT HACIENDA BL & ENCANADA DR	G 5540
BASELINE (2005)	593.400 180.869	L&BM TAG ON NW COR OF CONC STRUCTURE +/-76M(250FT) & 6.1M(20FT) W/O C/L INT HACIENDA BL & ENCANADA DR +/-3M(10FT) N/O SPEED CONTROL BOARD IN FRONT OF PARK	G 5541
BASELINE (2005)	498.777 152.028	L&LS#6921 TAG @ SE COR HACIENDA BL & WEST RD @ BASE OF TRAFFIC SIGNAL	G 5542
BASELINE (2005)	449.048 136.870	L&CO ENG TAG +/-6.1M(20FT) N/O BCR @ NE COR HANCIENDA BL & ESEVERRI LN	G 5543
BASELINE (2005)	432.379 131.790	L&T ON NE COR OF E CB TO SERVICE RD ISLAND OF HACIENDA BL & JANINE DR 1.2M(4FT) N/O BCR	G 5544
BASELINE (2005)	378.019 115.221	L&DPW TAG IN E CB 300MM(1FT) N/O BCR @ NE COR HACIENDA BL & LUJON ST	G 5545
BASELINE (2005)	363.440 110.777	L&DPW TAG IN W CB 3M(10FT) S/O C/L PROD SIGMAN ST ON HACIENDA BL	G 5546
BASELINE (2005)	363.002 110.643	L&N IN W CB 7.6M(25FT) N/O C/L PROD SIGMAN ST ON HACIENDA BL	G 5547
WHITTIER (2005)	615.427 187.583	L&DPW TAG IN E CB COLIMA RD 45M(150FT) S/O C/L PROD AVOCADO HILL WY (PVT RD) (NEXT TO FIRE HYD.)	G 5570
WHITTIER (2005)	671.713 204.739	L&DPW TAG @ SE COR TO DR @ HSE #2162 AVOCADO TER +/- 16.8M(55FT) N/O EDGERIDGE DR	G 5571
WHITTIER (2005)	636.756 194.084	CHIS "+" ON TOP OF FIRE HYD @ SW COR AVOCADO TER & TURNBULL CYN RD	G 5572
WHITTIER (2005)	504.904 153.895	L&LA CO ENG TAG @ MCR @ NE COR ORANGE GROVE AV & LAS TUNAS DR	G 5573
WHITTIER (2005)	500.977 152.698	L&T IN N CB 3.7M(12FT) E/O BCR @ NW COR ORANGE GROVE AV & 7TH AV	G 5574
WHITTIER (2005)	498.895 152.064	L&T @ MCR @ NE COR ORANGE GROVE AV & 7TH AV	G 5575
WHITTIER (2005)	447.170 136.298	L& LA CO ENG TAG IN S CB 13.7M(45FT) E/O BCR @ SE COR 7TH AV & LOS ROBLES AV	G 5576
WHITTIER (2005)	289.201 88.149	L&DPW TAG IN W CB DURFEE AV 3M(10FT) N/O C/L PROD DAHLIA AV	G 5577

QUAD YEAR	ELEV FOOT/METER	DESCRIPTION	BM NUMBER
WHITTIER (2005)	278.503 84.888	L&T IN W CB @ ECR @ SW COR DURFEE AV & ELLIOT AV	G 5578
WHITTIER (2005)	276.419 84.253	L&DPW TAG @ MCR @ SW COR DURFEE AV & MOREHOUSE ST	G 5579
BASELINE (2005)	177.234 54.021	L&BR IN S CB WHITTIER BLVD ON C/L PROD REDMAN AVE (TO THE N)	Y 619
BASELINE (2005)	238.500 72.695	L&T IN N CB (SERV RD) @ BCR @ SW COR WHITTIER BLVD & BOYER AVE	Y 1212
BASELINE (2005)	268.273 81.770	L&SPK IN S CB WHITTIER BLVD 41.5M(136FT) E/O C/L PROD CATALINA AVE	Y 1215A
BASELINE (2005)	266.367 81.189	L&LS#5411 TAG IN S CB 300MM(1FT) W/O BCR @ SW COR WHITTIER BLVD & GUNN AVE	Y 1216A
WHITTIER (2005)	250.303 76.293	L&BR IN E CB KAYDEL RD 600MM(2FT) S/O BCR @ SE COR PELLISSIER RD	Y 1269
WHITTIER (2005)	249.023 75.902	L&BR IN E CB MARDEL AVE 300MM(1FT) S/O BCR @ SE COR PELLISSIER RD	Y 1270
WHITTIER (2005)	247.192 75.344	L&BR IN E CB PEARSON AVE 300MM(1FT) S/O BCR @ SE COR PELLISSIER RD	Y 1271
WHITTIER (2005)	246.369 75.093	RDBM TAG IN W CB DURFEE AVE 2.7M(9FT) S/O BCR @ SW COR THIENES AVE	Y 1282A
BASELINE (2005)	188.704 57.517	L&BN IN E CB 4.6M(15FT) N/O BCR @ NE COR BEVERLY BLVD & DURFEE AVE	Y 2284
BASELINE (2005)	192.058 58.539	SM SPK IN N END 1ST STEP TO HSE #4252 @ NE COR DURFEE AVE & DORK ST	Y 2286
WHITTIER (2005)	240.946 73.441	L&SPK IN S CB 9M(29.5FT) E/O BCR @ SE COR PIONEER BLVD & SHERRILL ST	Y 3250
BASELINE (2005)	294.297 89.702	L&SPK IN S CB 14.6M(48FT) W/O BCR @ SW COR WHITTIER BLVD & FIRST ST	Y 3472A
BASELINE (2005)	335.105 102.140	CSBM MON IN RET 4M(13FT) S/O BCR @ NE COR WHITTIER BLVD & VALLEY HOME AVE MKD (38-1 1964)	Y 3475
BASELINE (2005)	336.160 102.462	L&BN IN S END C. B. 300MM(1FT) N/O BCR @ NE COR VALLEY HOME AVE & WHITTIER BLVD	Y 3476
BASELINE (2005)	250.883 76.469	ST CAL DIV HWYS BR DISC IN E END C. B. 63M(207FT) E/O BCR 81M(266FT) E/O C/L SCOTT AVE & 11.6M(38FT) N/O C/L WHITTIER BLVD	Y 3491A
BASELINE (2005)	250.887 76.471	L&SPK IN N CB (SERV RD) 5.5M(18FT) E/O BCR @ NE COR LA ENTRADA AVE & WHITTIER BLVD (SERV RD)	Y 3498
BASELINE (2005)	222.363 67.776	RDBM TAG E CB RET 300MM(1FT) N/O BCR @ SE COR WHITTIER BLVD & COMSTOCK AVE	Y 3732A

QUAD YEAR	ELEV FOOT/METER	DESCRIPTION	BM NUMBER
BASELINE (2005)	2,333.516 711.258	RDBM TAG IN CB RET 1M(3.3FT) N/O BCR @ SE COR WHITTIER BLVD & WASHINGTON AVE (FOR HISTORY SEE G3736A)	Y 3736A
BASELINE (2005)	212.634 64.811	RDBM TAG IN W END OF CONC BASE OF CTR PIER UPRR BRIDGE OVER WHITTIER BLVD 5M(16.4FT) N/O S CF & 46M(151FT) E/O C/L WASHINGTON BLVD (NR C/L PROD ALLEY TO THE N)	Y 4319
BASELINE (2005)	281.266 85.730	RDBM TAG IN TOP OF & @ E END OF CONC RET WALL 2.4M(8FT) N/O CF WHITTIER BLVD & 30.5M(100FT) NELY OF PROD RUSSELL ST	Y 4321
BASELINE (2005)	281.373 85.763	STATE HWY BR CAP IN N CB WHITTIER BLVD @ W END C. B. & 5.5M(18FT) W/O C/L PROD VIRGINIA AVE	Y 4322
WHITTIER (2005)	246.864 75.244	RDBM TAG IN N CB THIENES AVE 600MM(2FT) E/O BCR @ NE COR DURFEE AVE	Y 6265
WHITTIER (2005)	242.175 73.815	RDBM TAG IN CB MICHAEL HUNT DR 1M(3.3FT) E/O BCR @ NE COR PECK-DURFEE RD	Y 6266
WHITTIER (2005)	241.846 73.715	RDBM TAG IN W CB RET PECK-DURFEE RD 2M(6.5FT) N/O BCR @ SW COR MICHAEL HUNT DR	Y 6267
BASELINE (2005)	179.527 54.720	RDBM TAG IN W CB 11.3M(37FT) N/O BCR @ NW COR NORWALK BLVD & WHITTIER BLVD	Y 6627
BASELINE (2005)	203.525 62.035	CS MON FL 300MM(1FT) E/O E CF BROADWAY 8.8M(29FT) E/O C/L & 33M(108FT) N/O C/L WHITTIER BLVD MKD (BM 1-15A 1961)	Y 6628
BASELINE (2005)	200.667 61.163	L&T IN N CB 150MM(0.5FT) E/O BCR @ NW COR WHITTIER BLVD & BROADWAY	Y 6629
BASELINE (2005)	231.724 70.630	RDBM TAG IN NLY CB (SERV RD) WHITTIER BLVD 38M(125FT) W/O C/L @ OR NR C/L PROD PENN ST	Y 6631
BASELINE (2005)	215.048 65.547	CS MON IN N END C. B. 6M(20FT) N/O BCR 18M(59FT) E/O C/L WHITTIER BLVD & 27M(88FT) W/O C/L PICKERING AVE MKD (BM 1-14AB 1961 RE 5869)	Y 6633
BASELINE (2005)	236.371 72.046	CAL HWY BR DISC IN W END C. B. @ SW COR WHITTIER BLVD & BARTON RD	Y 6635
BASELINE (2005)	250.554 76.369	CSBM MON IN WELL @ BCR OF ISLAND 15M(49FT) N/O & 14.5M(47.6FT) E/O C/L INT LA ENTRADA AVE & WHITTIER BLVD MKD (BM 1-11A 1961 RE 5869)	Y 6636
BASELINE (2005)	276.252 84.202	ST CAL HWY MON @ E END C. B. 2M(6.5FT) W/O BCR 11.6M(38FT) N/O C/L WHITTIER BLVD & 2M(6.5FT) W/O C/L PROD SANTA GERTRUDES AVE	Y 6637
WHITTIER (2005)	254.263 77.500	BT SPK IN N CB 3M(10FT) E/O BCR @ NE COR WORKMAN MILL RD & CAMBRAY DR	Y 6641
BASELINE (2005)	183.371 55.892	FC MON @ NE COR BRIDGE OVER SAN GABRIEL RIVER 15M(49FT) N/O C/L WHITTIER BLVD MKD (BM 078-00010 1968)	Y 7750
BASELINE (2005)	184.442 56.218	FC MON @ SW COR BRIDGE OVER SAN GABRIEL RIVER 14M(46FT) S/O C/L WHITTIER BLVD MKD (BM 077-02855 1968)	Y 7751

QUAD YEAR	ELEV FOOT/METER	DESCRIPTION	BM NUMBER
BASELINE (2005)	217.940 66.428	CO ENG DISK FL @ SE COR BRIDGE OVER WHITTIER NARROWS RIVER 13M(42.7FT) E/O C/L ROSEMEAD BLVD & 644M(0.4MI) S/O SAN GABRIEL BLVD MKD (BM 1-20B 1965 RE 5869)	Y 7752
BASELINE (2005)	310.638 94.683	RDBM TAG IN CB 300MM(1FT) E/O BCR @ NW COR SAN GABRIEL BLVD & WALNUT GROVE AVE	Y 7754
BASELINE (2005)	318.006 96.929	RDBM TAG IN N CB 600MM(2FT) E/O BCR @ NE COR DELTA ST & SAN GABRIEL BL	Y 7755
BASELINE (2005)	320.112 97.570	RDBM TAG IN N CB 600MM(2FT) W/O BCR @ NW COR DELTA ST & SAN GABRIEL BLVD	Y 7756
BASELINE (2005)	335.850 102.367	RDBM TAG IN S CB 300MM(1FT) W/O BCR @ SW COR SAN GABRIEL BLVD & HILL ST	Y 7757
BASELINE (2005)	334.881 102.072	RDBM TAG IN N CB 300MM(1FT) W/O BCR @ NW COR SAN GABRIEL BLVD & HILL ST	Y 7758
WHITTIER (2005)	252.514 76.966	RDBM TAG IN S CB BEVERLY BLVD 300MM(1FT) W/O BCR @ SW COR PIONEER BLVD	Y 8044
WHITTIER (2005)	272.747 83.134	RDBM TAG IN E CB PIONEER BLVD 5M(16.4FT) N/O END OF CB & 21.5M(70.5FT) N/O C/L STRONG AVE	Y 8046
WHITTIER (2005)	234.707 71.539	CITY OF INDUSTRY MON IN ELY CB 2M(6.5FT) N/O BCR 20M(66FT) NLY C/L WORKMAN MILL RD & 14M(46FT) E/O C/L PECK RD MKD (BM P E L 1)	Y 8048
WHITTIER (2005)	234.830 71.576	L&BR IN E END CONC HDWL CULV N SIDE W BOUND (60) POMONA FRWY ON-RAMP 52M(171FT) N/O C/L & 35M(115FT) W/O C/L PECK RD	Y 8050
WHITTIER (2005)	236.102 71.964	RDBM TAG IN W CB PECK RD 6.4M(21FT) S/O BCR @ SW COR WITH ON-RAMP W BOUND (60) POMONA FRWY	Y 8051
WHITTIER (2005)	214.599 65.410	RDBM TAG IN NOSE OF SLY C/L MEDIAN 1.5M(5FT) W/O C/L ROSEMEAD BLVD & 744M(0.5MI) N/O C/L SAN GABRIEL BLVD APPROX 40M(131FT) S/O BUS LOADING ZONE E SIDE OF RD	Y 8060
WHITTIER (2005)	236.888 72.204	RDBM TAG IN E CB ROSEMEAD BLVD NR C/L PROD (60) FRWY OFF-RAMP FROM W	Y 8062
WHITTIER (2005)	237.794 72.480	RDBM TAG IN W CB ROSEMEAD BLVD 300MM(1FT) N/O BCR & 7.6M(25FT) N/O C/L OFF-RAMP (60) FRWY FR W 152M(500FT) S/O C/L FRWY	Y 8063
WHITTIER (2005)	238.965 72.837	RDBM TAG IN E CB ROSEMEAD BLVD 300MM(1FT) S/O BCR @ SE COR (60) FRWY OFF-RAMP FROM E 172M(564FT) N/O C/L FRWY	Y 8064
WHITTIER (2005)	238.272 72.626	RDBM TAG IN W CB ROSEMEAD BLVD & 2M(6.5FT) S/O C/L PROD (60) FRWY OFF-RAMP FROM E 165M(540FT) N/O C/L FRWY	Y 8065
WHITTIER (2005)	228.534 69.657	RDBM TAG 300MM(1FT) S/O NOSE OF C/L MEDIAN ROSEMEAD BLVD 1.8M(6FT) W/O C/L & 10M(32.8FT) S/O C/L ENT TO WHITTIER NARROWS REC AREA 645M(0.4MI) N/O C/L (60) FRWY	Y 8066
BASELINE (2005)	243.817 74.316	CAL DIV HWYS MON 4.6M(15FT) W/O BCR @ NW COR WHITTIER BLVD & CALIFORNIA AVE	Y 8180

QUAD YEAR	ELEV FOOT/METER	DESCRIPTION	BM NUMBER
BASELINE (2005)	252.833 77.064	L&BN IN S CB 300MM(1FT) E/O BCR @ SE COR WHITTIER BLVD & CALMADA AVE MKD (BM)	Y 8183
WHITTIER (2005)	217.316 66.238	RDBM TAG IN CB @ NOSE OF C/L MEDIAN ROSEMEAD BLVD 1.8M(6FT) W/O C/L & 11M(36FT) S/O C/L ENT TO PACHMAYR SHOOTING RANGE #831 (0.3 MI S/O (60) FRWY)	Y 8190
BASELINE (2005)	234.924 71.605	SPK IN N CB 3.4M(11FT) W/O BCR @ NW COR WHITTIER BL & WASHINGTON AVE	Y 8192
BASELINE (2005)	223.094 67.999	RDBM TAG IN S CB 600MM(2FT) W/O BCR @ SW COR WHITTIER BLVD & COMSTOCK AVE	Y 8193
BASELINE (2005)	323.462 98.592	RDBM TAG IN E CB 300MM(1FT) N/O BCR @ NE COR SAN GABRIEL BLVD & BLEEKER ST	Y 9439
BASELINE (2005)	324.732 98.979	CSBM MON IN WELL 600MM(2FT) S/O BCR @ SW COR SAN GABRIEL BLVD & BLEWETT ST MKD (BM 1-24C 1970 RE 5869)	Y 9440
BASELINE (2005)	212.280 64.703	RDBM TAG IN S CB 300MM(1FT) E/O BCR @ SE COR ROSEMEAD BLVD & SAN GABRIEL BLVD	Y 9442
BASELINE (2005)	354.261 107.979	FC MON IN E END C. B. 7.5M(24.5FT) W/O BCR @ NW COR VALLEY HOME AVE & RUSSELL ST MKD (BM 109-07530 1963)	Y 9446
BASELINE (2005)	249.093 75.924	CSBM MON IN W END C. B. 4M(13FT) W/O BCR @ NW COR BEN HUR AVE & WHITTIER BLVD (SERV RD) MKD (1-11C 1965 RE 5869)	Y 9448
BASELINE (2005)	231.954 70.700	L&T IN S CB (SERV RD) 300MM(1FT) W/O BCR @ SE COR WHITTIER BLVD & JACMAR AVE	Y 9449
BASELINE (2005)	180.235 54.936	RDBM TAG IN E CB 7M(23FT) N/O BCR @ NE COR WHITTIER BLVD & DURFEE AVE	Y 9756
BASELINE (2005)	180.148 54.909	RDBM TAG IN W CB 9M(29.5FT) N/O BCR @ NW COR DURFEE AVE & WHITTIER BLVD	Y 9757
BASELINE (2005)	184.665 56.286	RDBM TAG IN E CB 300MM(1FT) S/O BCR @ SE COR BEVERLY RD & DURFEE AVE	Y 9759
BASELINE (2005)	184.826 56.335	RDBM TAG IN C. B. 1M(3.3FT) E/O BCR @ NE COR BEVERLY RD & DURFEE AVE	Y 9760
WHITTIER (2005)	192.689 58.732	RDBM TAG IN S CB 300MM(1FT) E/O BCR @ SE COR PIONEER BLVD & ORANGE AVE	Y 9769
WHITTIER (2005)	224.663 68.477	L&PK SPK IN CB RET 4.6M(15FT) S/O BCR @ NE COR ORANGE GROVE AVE & PIONEER BLVD	Y 9770
WHITTIER (2005)	253.594 77.296	RDBM TAG IN S CB BEVERLY BLVD @ W END C. B. 2.4M(8FT) E/O BCR @ SE COR PIONEER BLVD	Y 9771
WHITTIER (2005)	225.342 68.684	RDBM TAG IN E CB SANTA ANITA AVE 600MM(2FT) N/O BCR @ NE COR DURFEE AVE	Y 9775
WHITTIER (2005)	233.782 71.257	RDBM TAG IN E END C. B. 3M(10FT) E/O BCR @ SW COR PECK RD & DURFEE AVE	Y 9776

QUAD YEAR	ELEV FOOT/METER	DESCRIPTION	BM NUMBER
WHITTIER (2005)	234.615 71.511	RDBM TAG IN N END C. B. 16.5M(54FT) N/O BCR @ NW COR DURFEE AVE & PECK RD	Y 9777
WHITTIER (2005)	260.440 79.382	L&BN @ SW COR BRIDGE OVER (605) FRWY 4.3M(14FT) W/O C/L PECK RD & 163M(535FT) N/O C/L PELLISSIER PL	Y 9785
WHITTIER (2005)	261.064 79.573	L&BN @ SE COR BRIDGE OVER (605) FRWY 4.3M(14FT) E/O C/L PECK RD & 171M(561FT) N/O C/L PELLISSIER PL	Y 9786
WHITTIER (2005)	238.172 72.595	RDBM TAG IN S CB 3M(10FT) E/O BCR @ SE COR PECK RD & ROOKS RD	Y 9787
WHITTIER (2005)	238.474 72.687	RDBM TAG IN NE CB RET 600MM(2FT) W/O BCR @ NE COR PECK RD & ROOKS RD	Y 9788
WHITTIER (2005)	243.371 74.180	RDBM TAG IN N CB KATHLEEN ST 6.7M(22FT) E/O BCR @ NE COR KELLA AVE	Y 9790
WHITTIER (2005)	250.145 76.244	RDBM TAG IN N CB PELLISSIER RD 6M(20FT) N/O C/L & 8M(26.2FT) W/O C/L KAYDEL RD	Y 9792
BASELINE (2005)	247.145 75.330	RDBM TAG IN N CB 2M(6.5FT) W/O BCR @ NW COR WHITTIER BLVD (SERV RD) & MILLS AVE 14M(46FT) W/O & 4.6M(15FT) N/O C/L INT	Y 10055
WHITTIER (2005)	244.128 74.410	L&BR IN SLY CB KATHLEEN ST & 16M(52.5FT) WLY OF C/L PROD KAYDEL RD	Y 10104
BASELINE (2005)	266.653 81.276	L&BR IN S CB 300MM(1FT) E/O BCR @ SE COR WHITTIER BLVD & COLE RD	Y 10250
BASELINE (2005)	240.344 73.257	RAMSET IN MCR @ SW COR WHITTIER BLVD & PAINTER AVE	Y 10251
BASELINE (2005)	194.706 59.347	DPW BM TAG IN W CB 300MM(1FT) S/O BCR @ SW COR DURFEE AVE & ISORA ST	Y 10254
BASELINE (2005)	212.434 64.750	DPW BM TAG IN N CB 300MM(1FT) W/O BCR @ NW COR ROSEMEAD BLVD & SAN GABRIEL BLVD	Y 10255
BASELINE (2005)	246.841 75.237	LACO BM TAG IN E CB 300MM(1FT) S/O BCR @ SE COR SAN GABRIEL BLVD & DARLINGTON ST	Y 10256
BASELINE (2005)	250.927 76.483	DPW BM TAG IN E CB 300MM(1FT) N/O BCR @ NE COR SAN GABRIEL BLVD & DARLINGTON ST	Y 10257
BASELINE (2005)	279.038 85.051	DPW BM TAG IN E CB 300MM(1FT) N/O BCR @ NE COR MUSCATEL AVE & SAN GABRIEL BLVD	Y 10258
WHITTIER (2005)	320.541 97.701	L&RCE TAG #8244 IN NLY CB FONTENOY AVE 300MM(1FT) E/O BCR @ NE COR WORKMAN MILL RD	Y 10372
WHITTIER (2005)	290.994 88.695	DPW BM TAG IN E END C. B. @ SE COR BRIDGE OVER SAN JOSE CREEK 9M(29.5FT) S/O C/L WORKMAN MILL RD & 6M(19.7FT) W/O C/L PROD ROLLING GREEN WAY	Y 10373
WHITTIER (2005)	242.024 73.769	CSBM MON IN N END C. B. 10M(33FT) W/O C/L WORKMAN MILL RD & 8M(26FT) N/O N SIDE BLDG #2829 805M(0.5MI) N/O PECK RD MKD (BM 11-125A 1975 RE 7078)	Y 10375

QUAD YEAR	ELEV FOOT/METER	DESCRIPTION	BM NUMBER
WHITTIER (2005)	241.865 73.721	CITY OF INDUSTRY MON IN W CB WORKMAN MILL RD NR FRONT OF BLDG #3200 @ LT STD MKD (BM WM-5) 268M(0.2MI) N/O C/L NORTH DR	Y 10467
WHITTIER (2005)	239.052 72.863	DPW BM TAG 300MM(1FT) N/O BCR @ NE COR WORKMAN MILL RD & MISSION MILL RD	Y 10469
WHITTIER (2005)	237.093 72.266	DPW BM TAG IN W END C. B. 1M(3.3FT) E/O BCR @ SE COR WORKMAN MILL RD & MISSION MILL RD	Y 10470
WHITTIER (2005)	231.971 70.705	DPW BM TAG 300MM(1FT) E/O BCR @ NE COR WORKMAN MILL RD & SPY GLASS HILL RD	Y 10471
WHITTIER (2005)	232.148 70.759	DPW BM TAG 300MM(1FT) E/O BCR @ SE COR WORKMAN MILL RD & SPY GLASS HILL RD	Y 10472
WHITTIER (2005)	252.424 76.939	DPW BM TAG IN E CB WORKMAN MILL RD 300MM(1FT) N/O C. B. & 11M(36FT) N/O C/L PROD PIONEER BLVD	Y 10473
WHITTIER (2005)	255.728 77.946	DPW BM TAG IN WLY CB 300MM(1FT) N/O BCR @ NW COR WORKMAN MILL RD & PIONEER BLVD	Y 10474
WHITTIER (2005)	193.690 59.037	DPW BM TAG IN S END C. B. 600MM(2FT) N/O BCR @ NE COR PIONEER BLVD & ORANGE AVE	Y 10475
WHITTIER (2005)	235.110 71.662	DPW BM TAG IN S CB @ W END C. B. 10M(33FT) S/O C/L DURFEE AVE & 21M(69FT) E/O C/L ENT TO WHITTIER NARROWS NATURE CENTER #1000	Y 10476
WHITTIER (2005)	224.995 68.579	DPW BM TAG IN W CB SANTA ANITA AVE 3M(10FT) N/O BCR @NW COR DURFEE AVE	Y 10477
BASELINE (2005)	181.408 55.293	LACO BM TAG IN E CB 1M(3.3FT) N/O BCR @ NE COR WHITTIER BLVD & PASSONS BLVD	Y 10689
BASELINE (2005)	180.778 55.101	LACO BM TAG IN W CB 8M(26FT) N/O BCR @ NW COR WHITTIER BLVD & PASSONS BLVD	Y 10690
BASELINE (2005)	271.638 82.796	LACO BM TAG IN E CB 2M(6.5FT) N/O BCR @ NE COR SAN GABRIEL BLVD & RUSH ST	Y 10697
BASELINE (2005)	280.880 85.612	LACO BM TAG IN E CB 4.3M(14FT) S/O BCR @ SE COR SAN GABRIEL BLVD & KLINGERMAN	Y 10698
BASELINE (2005)	281.155 85.696	L&BR IN W CB 300MM(1FT) N/O BCR @ NW COR SAN GABRIEL BLVD & BARUCH ST	Y 10699
BASELINE (2005)	268.735 81.911	DPW BM TAG IN W CB 1M(3.3FT) S/O BCR @ SW COR SAN GABRIEL BLVD & GARVALIA AVE	Y 10700
BASELINE (2005)	219.140 66.794	L&BR IN S CB 17M(56FT) W/O BCR @ SW COR SAN GABRIEL BLVD & LINCOLN AVE	Y 10704
BASELINE (2005)	230.011 70.108	LACO BM TAG IN E CB 11.5M(38FT) S/O BCR @ SE COR SAN GABRIEL BLVD & PLAZA DR	Y 10707
BASELINE (2005)	197.557 60.216	L&T IN W CB 150MM(0.5FT) N/O BCR @ NW COR SANDOWN RD & DURFEE AVE	Y 10888

QUAD YEAR	ELEV FOOT/METER	DESCRIPTION	BM NUMBER
BASELINE (2005)	197.030 60.055	CSBM DISC IN SW LEG OF DWP TOWER # 253D4 @ NE COR DURFEE AVE & KRUSE RD MKD (BM 1-19A 1970)	Y 10889
BASELINE (2005)	313.325 95.502	DPW BM TAG IN N CB WHITTIER BLVD 8M(26FT) W/O C/L PROD JORDAN RD	Y 11160
BASELINE (2005)	296.663 90.423	DPW BM TAG IN S CB 2M(6.5FT) E/O BCR @ SE COR WHITTIER BLVD & FIRST ST	Y 11162
BASELINE (2005)	258.906 78.915	DPW BM TAG IN N CB WHITTIER BLVD 11.5M(37.7FT) N/O C/L & 7M(23FT) E/O C/L W DRWY ENT TO BLDG #15545	Y 11163
BASELINE (2005)	263.757 80.393	DPW BM TAG IN S CB 1M(3.3FT) W/O BCR @ SW COR WHITTIER BLVD & COLIMA RD	Y 11164
BASELINE (2005)	239.652 73.046	L&BN IN E CB 300MM(1FT) S/O BCR @ SE COR WHITTIER BLVD & PAINTER AVE	Y 11166
BASELINE (2005)	228.307 69.588	DPW BM TAG IN ELY CB WHITTIER BLVD 18.5M E/O C/L & 3M N/O C/L PROD PACIFIC PLACE	Y 11167
BASELINE (2005)	237.651 72.436	DPW BM TAG IN NLY CB 1M(3.3FT) E/O BCR @ NE COR WHITTIER BLVD & PHILADELPHIA ST	Y 11168
BASELINE (2005)	234.762 71.556	DPW BM TAG SLY CB 3M(10FT) S/O BCR @ SELY COR WHITTIER BLVD & SORENSEN AVE	Y 11169
BASELINE (2005)	217.097 66.171	DPW BM TAG IN N CB 1M(3.3FT) W/O BCR @ NW COR WHITTIER BLVD & GRETNA AVE	Y 11170
BASELINE (2005)	188.013 57.307	BT SPK IN S CB 2.4M(8FT) W/O BCR @ SW COR WHITTIER BLVD & GLENGARRY AVE	Y 11171
WHITTIER (2005)	236.203 71.995	CITY OF INDUSTRY DISC IN S CB 450MM(1.5FT) W/O BCR @ SW COR PECK RD & PELLISSIER PL MKD (BM P F L-3R)	Y 11183
WHITTIER (2005)	262.330 79.958	CSBM MON IN CONC ABUT OF BRIDGE OVER (605) FRWY 19M(62.3FT) E/O C/L PECK RD & 5.7M(18.7FT) S/O N END BRIDGE MKD (14-1B 1971 RE 7078)	Y 11185
WHITTIER (2005)	247.431 75.417	L&BR IN SE COR BRIDGE ABUT OVER SAN GABRIEL RIVER 9M(29.5FT) E/O C/L PECK RD (1FT E/O CF)	Y 11186
WHITTIER (2005)	229.202 69.861	LACO DPW TAG IN E CB WORKMAN MILL RD & 1M(3.3FT) N/O C/L PROD & OPP GATE #11 TO ROSE HILLS CEMETERY	Y 11187
WHITTIER (2005)	228.473 69.639	DPW BM TAG IN E CB WORKMAN MILL RD 3M(10FT) N/O BCR NR S END C. B. @ NE COR CLIOTA ST	Y 11188
WHITTIER (2005)	249.009 75.898	L&SPK IN E CB WORKMAN MILL RD 100MM(4IN) S/O BCR & 18M(59FT) N/O C/L GATE #1 ROSE HILLS MAIN CEMETERY ENTRANCE	Y 11189
WHITTIER (2005)	278.560 84.905	DPW BM TAG IN S CB WORKMAN MILL RD 2M(6.5FT) E/O BCR @ SE COR CROSSROADS PKWY	Y 11191

QUAD YEAR	ELEV FOOT/METER	DESCRIPTION	BM NUMBER
WHITTIER (2005)	287.395 87.598	DPW BM TAG IN SW COR BRIDGE OVER SAN JOSE CREEK 9M(29.5FT) S/O C/L WORKMAN MILL RD & 72M(236FT) E/O C/L WHITTIER WOODS RD	Y 11192
WHITTIER (2005)	232.358 70.823	DPW BM TAG IN S CB DURFEE AVE & 10.5M(34.4FT) E/O C/L DRWY TO HSE #902 (0.3 MI E/O SANTA ANITA AVE)	Y 11194
WHITTIER (2005)	234.910 71.601	DPW BM TAG IN S CB 1M(3.3FT) W/O BCR 10M(33FT) S/O C/L DURFEE AVE & 7M(23FT) W/O C/L ENT TO WHITTIER NARROWS NATURE CENTER #1000	Y 11195
WHITTIER (2005)	213.052 64.938	CORP ENG MON IN CB RET 3M(10FT) S/O BCR @ NE COR ROSEMEAD BLVD & DURFEE AVE MKD (WS 112 LADO 1981)	Y 11196
WHITTIER (2005)	213.039 64.934	L&T IN W CB C/L MEDIAN 2.6M(8.5FT) W C/L ROSEMEAD BL ON C/L PROD ENT RD TO LACO WATER RECLAIM PLANT #301 (790FT N/O C/L DURFEE AVE)	Y 11197
WHITTIER (2005)	238.711 72.759	CORP ENG MON IN E CB ROSEMEAD BLVD & 16.5M(54FT) N/O C/L OFF-RAMP E BOUND (60) FRWY 144M(472FT) S/O C/L FRWY	Y 11198
WHITTIER (2005)	190.854 58.172	LACO BM TAG IN N CB 300MM(1FT) W/O BCR @ NW COR ORANGE DR & REDMAN AVE	Y 11544
WHITTIER (2005)	222.968 67.961	L&T IN W CB PIONEER BLVD & 26M(85FT) S/O C/L PROD ORANGE GROVE AVE	Y 11545
WHITTIER (2005)	252.557 76.980	LACO BM TAG IN E CB 1M(3.3FT) S/O BCR @ SE COR WORKMAN MILL RD & PELLISSIER PL (W)	Y 11546
WHITTIER (2005)	246.869 75.246	L&T IN N CB PELLISSIER RD ON C/L PROD PEARSON AVE	Y 11547
WHITTIER (2005)	221.879 67.629	L&BN IN E CB OF DRWY ENTRANCE TO WHITTIER NARROWS PARK 17M(56FT) N/O C/L DURFEE AVE & 46M(151FT) W/O C/L VELSIR ST	Y 11548
BASELINE (2005)	230.968 70.399	L&LADPW BM TAG 300MM(1FT) N/O BCR @ N/WLY COR SAN GABRIEL BL & PLAZA DR	Y 11800
BASELINE (2005)	216.400 65.959	L&LADPW BM TAG 300MM(1FT) E/O BCR @ SE COR SAN GABRIEL BL & LINCOLN AV	Y 11801
BASELINE (2005)	182.611 55.660	L&DPW TAG IN E CB @ BCR @ NE COR STEPHEN ST & DURFEE AV	Y 11802
BASELINE (2005)	187.768 57.232	L&T IN S CB @ BCR @ SE COR BEVERLY BL & DUEFEE AV	Y 11803
BASELINE (2005)	179.208 54.623	L&DPW BM TAG N CB 300MM(1FT) W/O BCR @ W END C.B. @ NE COR WHITTIER BL & NORWALK BL	Y 11804
BASELINE (2005)	231.173 70.462	L&DPW BM TAG SLY CB (SERVICE RD) WHITTIER BL @ C/L PROD PENN ST	Y 11805
BASELINE (2005)	251.635 76.699	L&LS#2342 TAG 300MM(1FT) E/O BCR @ B/W @ SW COR WHITTIER BL & CALMADA AV	Y 11806

QUAD YEAR	ELEV FOOT/METER	DESCRIPTION	BM NUMBER
BASELINE (2005)	262.292 79.947	L&DPW BM TAG W CB 1.5M(5FT) N/O BCR @ SW COR WHITTIER BL & COLIMA RD	Y 11807
BASELINE (2005)	252.229 76.880	L&T IN MCR @ SE COR WHITTIER BL & SCOTT AV	Y 11808
WHITTIER (2005)	343.104 104.578	L&T @ MCR @ SW COR WORKMAN MILL RD & OAKMAN DR	Y 11872
WHITTIER (2005)	237.964 72.532	BRASS DISK @ REAR OF WHEEL CHAIR RAMP @ SE COR WORKMAN MILL RD & PECK RD MKD (RHC 2)	Y 11873
WHITTIER (2005)	239.608 73.033	CITY OF INDUSTRY DISK @ NW COR OF C.B. IN W CB WORKMAN MILL RD +/-100FT S/O BLDG #3200 (GUARD SHACK) MKD (WM 6)	Y 11874
WHITTIER (2005)	245.634 74.869	CITY OF INDUSTRY DISK IN W CB WORKMAN MILL RD @ NW COR C.B. NEAR S END BLDG #2601 MKD (WM 1)	Y 11875
WHITTIER (2005)	218.323 66.545	L&DPW TAG IN E CB TO DR ENT @ TO BLDG #329 DURFEE AV	Y 11876
WHITTIER (2005)	217.929 66.425	L&DPW TAG IN W CB TO DR @ ENT TO BLDG #329 DURFEE AV	Y 11877